

[KO Validated] YAP1 Rabbit mAb

Catalog No.: A19134 **KO Validated** **Recombinant** **8 Publications**

Basic Information

Observed MW

70kDa

Calculated MW

36kDa/48kDa/49kDa/50kDa/52kDa/53kDa/54kDa

Category

Primary antibody

Applications

WB,IHC-P,IF/ICC,IP,ELISA

Cross-Reactivity

Human, Mouse, Rat

CloneNo number

ARC53477

Recommended Dilutions

WB	1:2000 - 1:4000
IHC-P	1:100 - 1:500
IF/ICC	1:50 - 1:200
IP	0.5µg-4µg antibody for 200µg-400µg extracts of whole cells
ELISA	Recommended starting concentration is 1 µg/mL. Please optimize the concentration based on your specific assay requirements.

Contact

☎ | 400-999-6126

✉ | cn.market@abclonal.com.cn

🌐 | www.abclonal.com.cn

Background

This gene encodes a downstream nuclear effector of the Hippo signaling pathway which is involved in development, growth, repair, and homeostasis. This gene is known to play a role in the development and progression of multiple cancers as a transcriptional regulator of this signaling pathway and may function as a potential target for cancer treatment. Alternative splicing results in multiple transcript variants encoding different isoforms.

Immunogen Information

Gene ID

10413

Swiss Prot

P46937

Immunogen

Recombinant fusion protein containing a sequence corresponding to amino acids 155-504 of human YAP1 (NP_001123617.1).

Synonyms

YAP; YKI; COB1; YAP2; YAP-1; YAP65; P1

Product Information

Source

Rabbit

Isotype

IgG

Purification

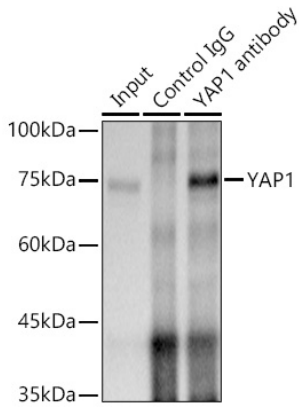
Affinity purification

Storage

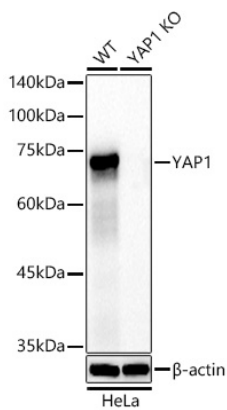
Store at -20°C. Avoid freeze / thaw cycles.

Buffer: PBS with 0.05% proclin300,0.05% BSA,50% glycerol,pH7.3.

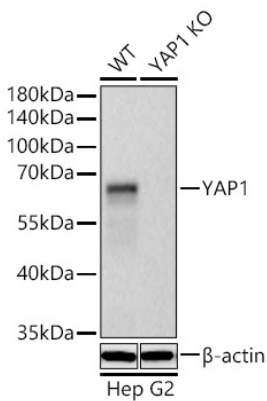
Validation Data



Immunoprecipitation analysis of 300 µg extracts of A-549 cells using 3 µg YAP1 antibody (A19134). Western blot was performed from the immunoprecipitate using YAP1 antibody (A19134) at a dilution of 1:500.

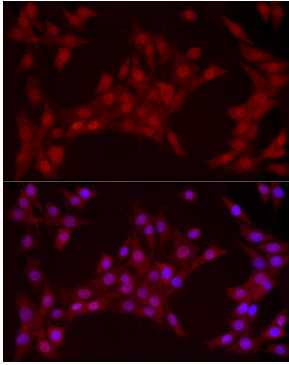


Western blot analysis of lysates from wild type(WT) and YAP1 knockout (KO) HeLa cells, using [KO Validated] YAP1 Rabbit mAb (A19134) at 1:4000 dilution.
Secondary antibody: HRP-conjugated Goat anti-Rabbit IgG (H+L) (AS014) at 1:10000 dilution.
Lysates/proteins: 25µg per lane.
Blocking buffer: 3% nonfat dry milk in TBST.
Detection: ECL Basic Kit (RM00020).
Exposure time: 1s.

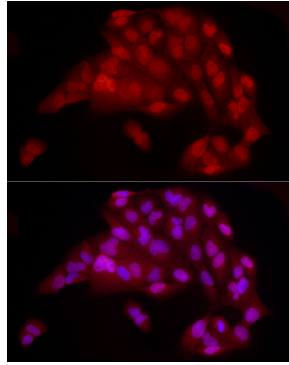


Western blot analysis of lysates from wild type (WT) and YAP1 knockout (KO) HeLa cells using [KO Validated] YAP1 Rabbit mAb (A19134) at 1:10000 dilution incubated overnight at 4°C.
Secondary antibody: HRP-conjugated Goat anti-Rabbit IgG (H+L) (AS014) at 1:10000 dilution.
Lysates/proteins: 25 µg per lane.
Blocking buffer: 3% nonfat dry milk in TBST.
Detection: ECL Basic Kit (RM00020).
Exposure time: 10s.

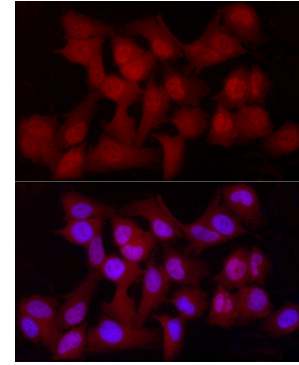
Validation Data



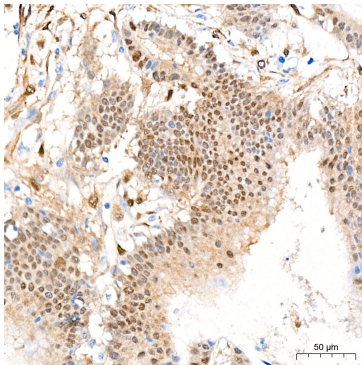
Immunofluorescence analysis of NIH/3T3 cells using [KO Validated] YAP1 Rabbit mAb (A19134) at dilution of 1:100 (40x lens). Secondary antibody: Cy3-conjugated Goat anti-Rabbit IgG (H+L) (AS007) at 1:500 dilution. Blue: DAPI for nuclear staining.



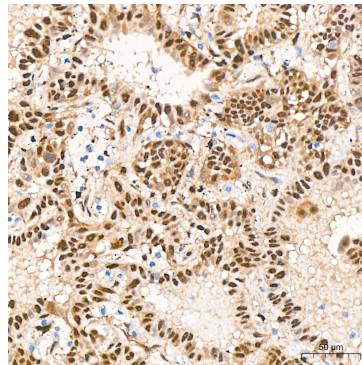
Immunofluorescence analysis of U2OS cells using [KO Validated] YAP1 Rabbit mAb (A19134) at dilution of 1:100 (40x lens). Secondary antibody: Cy3-conjugated Goat anti-Rabbit IgG (H+L) (AS007) at 1:500 dilution. Blue: DAPI for nuclear staining.



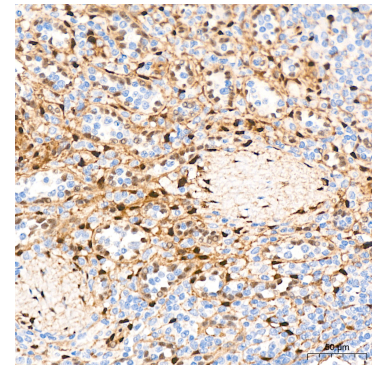
Immunofluorescence analysis of HeLa cells using [KO Validated] YAP1 Rabbit mAb (A19134) at dilution of 1:100 (40x lens). Secondary antibody: Cy3-conjugated Goat anti-Rabbit IgG (H+L) (AS007) at 1:500 dilution. Blue: DAPI for nuclear staining.



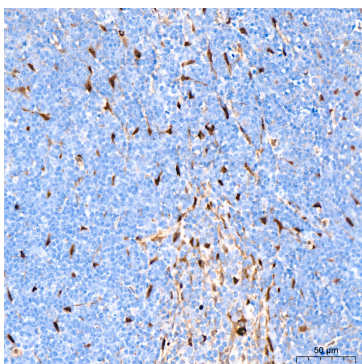
Immunohistochemistry analysis of paraffin-embedded Human colon carcinoma tissue using [KO Validated] YAP1 Rabbit mAb (A19134) at a dilution of 1:400 (40x lens). High pressure antigen retrieval performed with 0.01M Citrate Bufferr (pH 6.0) prior to IHC staining.



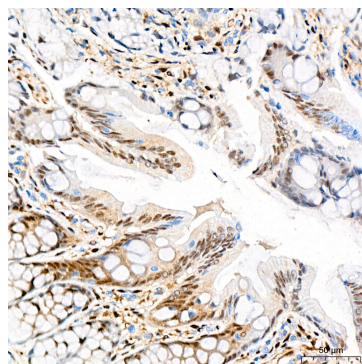
Immunohistochemistry analysis of paraffin-embedded Human lung adenocarcinoma tissue using [KO Validated] YAP1 Rabbit mAb (A19134) at a dilution of 1:400 (40x lens). High pressure antigen retrieval performed with 0.01M Citrate Bufferr (pH 6.0) prior to IHC staining.



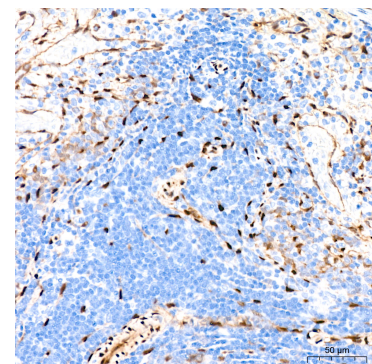
Immunohistochemistry analysis of paraffin-embedded Human spleen tissue using [KO Validated] YAP1 Rabbit mAb (A19134) at a dilution of 1:400 (40x lens). High pressure antigen retrieval performed with 0.01M Citrate Bufferr (pH 6.0) prior to IHC staining.



Immunohistochemistry analysis of paraffin-embedded Mouse spleen tissue using [KO Validated] YAP1 Rabbit mAb (A19134) at a dilution of 1:400 (40x lens). High pressure antigen retrieval performed with 0.01M Citrate Bufferr (pH 6.0) prior to IHC staining.



Immunohistochemistry analysis of paraffin-embedded Rat colon tissue using [KO Validated] YAP1 Rabbit mAb (A19134) at a dilution of 1:400 (40x lens). High pressure antigen retrieval performed with 0.01M Citrate Bufferr (pH 6.0) prior to IHC staining.



Immunohistochemistry analysis of paraffin-embedded Rat spleen tissue using [KO Validated] YAP1 Rabbit mAb (A19134) at a dilution of 1:400 (40x lens). High pressure antigen retrieval performed with 0.01M Citrate Bufferr (pH 6.0) prior to IHC staining.