

CXCL10/IP-10 Rabbit pAb

Catalog No.: A19138

Basic Information

Observed MW

11kDa

Calculated MW

11kDa

Category

Primary antibody

Applications

ELISA, WB, IF/ICC

Cross-Reactivity

Human, Mouse

Background

This antimicrobial gene encodes a chemokine of the CXC subfamily and ligand for the receptor CXCR3. Binding of this protein to CXCR3 results in pleiotropic effects, including stimulation of monocytes, natural killer and T-cell migration, and modulation of adhesion molecule expression. This gene may also be a key regulator of the 'cytokine storm' immune response to SARS-CoV-2 infection.

Recommended Dilutions

WB	1:1000 - 1:5000
IF/ICC	1:50 - 1:200

Immunogen Information

Gene ID

3627

Swiss Prot

P02778

Immunogen

Recombinant fusion protein containing a sequence corresponding to amino acids 22-98 of human CXCL10/IP-10 (NP_001556.2).

Synonyms

C7; IFI10; INP10; IP-10; crg-2; mob-1; SCYB10; gIP-10; CXCL10/IP-10

Contact

 | 400-999-6126

 | cn.market@abclonal.com.cn

 | www.abclonal.com.cn

Product Information

Source

Rabbit

Isotype

IgG

Purification

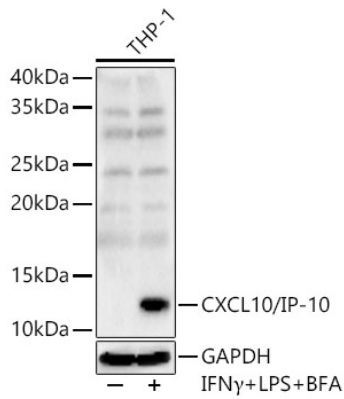
Affinity purification

Storage

Store at -20°C. Avoid freeze / thaw cycles.

Buffer: PBS with 0.05% proclin300, 50% glycerol, pH7.3.

Validation Data



Western blot analysis of lysates from THP-1 cells, using CXCL10/IP-10 Rabbit pAb (A19138) at 1:3000 dilution. THP-1 cells were treated by LPS for 6 hours, Brefeldin A for 3 hours and IFN γ (50ng/ml) for 8 hours of stimulation.

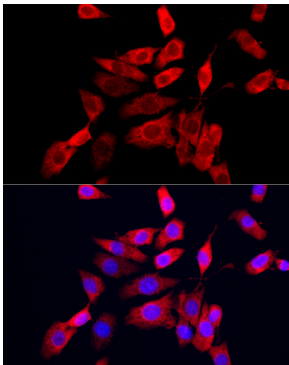
Secondary antibody: HRP Goat Anti-Rabbit IgG (H+L) (AS014) at 1:10000 dilution.

Lysates/proteins: 25 μ g per lane.

Blocking buffer: 3% nonfat dry milk in TBST.

Detection: ECL Basic Kit (RM00020).

Exposure time: 30s.



Immunofluorescence analysis of NIH/3T3 cells using CXCL10/IP-10 Rabbit pAb (A19138) at dilution of 1:200 (40x lens). Secondary antibody: Cy3 Goat Anti-Rabbit IgG (H+L) (AS007) at 1:500 dilution. Blue: DAPI for nuclear staining.