

# OsELF3 Rabbit pAb

Catalog No.: A19188

## Basic Information

### Observed MW

83kDa

### Calculated MW

82kDa

### Category

Primary antibody

### Applications

ELISA, WB

### Cross-Reactivity

Oryza sativa

## Background

Involved in the regulation of flowering time under short day (SD) and long day (LD) conditions. Functions as floral promoter by negatively regulating GHD7, a repressor of the photoperiodic control of flowering. Acts as floral activator in the LD photoperiodic pathway. Involved in blue light-induced activation of EHD1 expression to promote flowering under SD conditions

## Recommended Dilutions

WB 1:500 - 1:2000

## Immunogen Information

### Gene ID

4340087

### Swiss Prot

Q9SNQ6

### Immunogen

Recombinant fusion protein containing a sequence corresponding to amino acids 1-172 of Oryza sativa OsELF3. (Q9SNQ6).

### Synonyms

Ef7; HD3B; Hd-q; Hd17; ELF3-1; OsELF3; OsELF3-1; OsJ\_20086; OsELF3

## Contact

☎ | 400-999-6126

✉ | [cn.market@abclonal.com.cn](mailto:cn.market@abclonal.com.cn)

🌐 | [www.abclonal.com.cn](http://www.abclonal.com.cn)

## Product Information

### Source

Rabbit

### Isotype

IgG

### Purification

Affinity purification

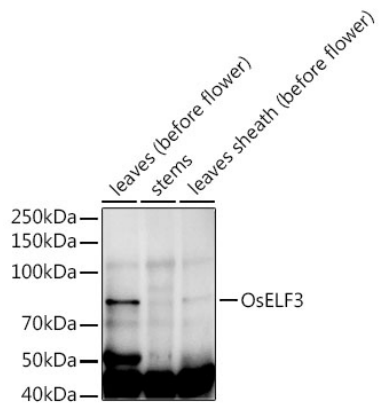
### Storage

Store at -20°C. Avoid freeze / thaw cycles.

Buffer: PBS with 0.02% sodium azide, 50% glycerol, pH7.3.

## Validation Data

---



Western blot analysis of extracts of various tissues from the japonica rice (*Oryza sativa* L.) variety Zhonghua 11, using OsELF3 Rabbit pAb (A19188) at 1:1000 dilution.  
Secondary antibody: HRP Goat Anti-Rabbit IgG (H+L) (AS014) at 1:10000 dilution.  
Lysates/proteins: 25µg per lane.  
Blocking buffer: 3% nonfat dry milk in TBST.  
Detection: ECL Enhanced Kit (RM00021).  
Exposure time: 120s.