

# SUPT5H/SPT5 Rabbit mAb

Catalog No.: A19225 **Recombinant** **1 Publications**

## Basic Information

### Observed MW

150kDa/

### Calculated MW

121kDa

### Category

Primary antibody

### Applications

WB,IHC-P,IF/ICC,IP,ELISA

### Cross-Reactivity

Human, Mouse, Rat

### CloneNo number

ARC2380

## Background

Enables enzyme binding activity and protein heterodimerization activity. Involved in positive regulation of macroautophagy; regulation of RNA metabolic process; and transcription elongation from RNA polymerase II promoter. Located in nucleoplasm. Part of DSIF complex.

## Recommended Dilutions

**WB** 1:500 - 1:1000

**IHC-P** 1:50 - 1:200

**IF/ICC** 1:50 - 1:200

**IP** 0.5µg-4µg antibody for  
200µg-400µg extracts of  
whole cells

**ELISA** Recommended starting  
concentration is 1 µg/mL.  
Please optimize the  
concentration based on  
your specific assay  
requirements.

## Contact

☎ | 400-999-6126

✉ | [cn.market@abclonal.com.cn](mailto:cn.market@abclonal.com.cn)

🌐 | [www.abclonal.com.cn](http://www.abclonal.com.cn)

## Immunogen Information

### Gene ID

6829

### Swiss Prot

O00267

### Immunogen

Synthetic peptide. This information is considered to be commercially sensitive.

### Synonyms

SPT5; SPT5H; Tat-CT1; SUPT5H/SPT5

## Product Information

### Source

Rabbit

### Isotype

IgG

### Purification

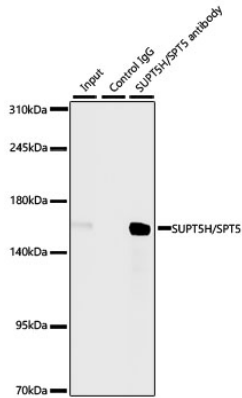
Affinity purification

### Storage

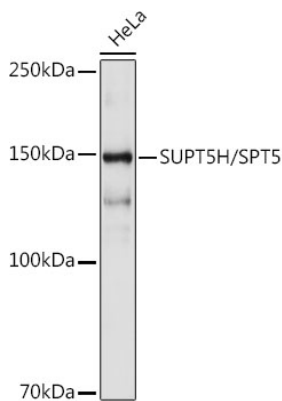
Store at -20°C. Avoid freeze / thaw cycles.

Buffer: PBS containing 50% glycerol and 0.05% BSA, preserved with proclin300 or sodium azide (as specified on the Certificate of Analysis), pH 7.3.

## Validation Data



Immunoprecipitation of SUPT5H/SPT5 from 300  $\mu$ g extracts of HeLa cells was performed using 3  $\mu$ g of SUPT5H/SPT5 Rabbit mAb (A19225). Rabbit Control IgG (AC005) was used to precipitate the Control IgG sample. IP samples were eluted with 1X Laemmli Buffer. The Input lane represents 10% of the total input. Western blot analysis of immunoprecipitates was conducted using SUPT5H/SPT5 Rabbit mAb (A19225) at a dilution of 1:1000.



Western blot analysis of lysates from HeLa cells, using SUPT5H/SPT5 Rabbit mAb (A19225) at 1:1000 dilution.

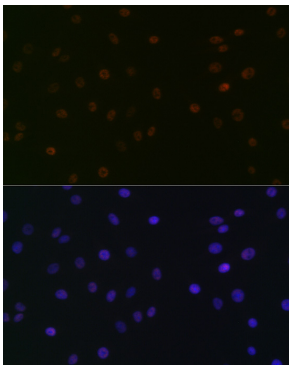
Secondary antibody: HRP-conjugated Goat anti-Rabbit IgG (H+L) (AS014) at 1:10000 dilution.

Lysates/proteins: 25 $\mu$ g per lane.

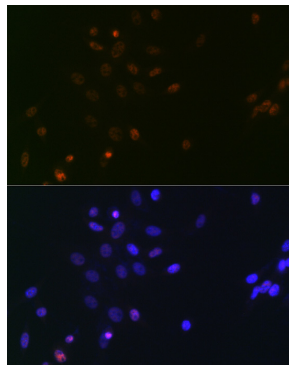
Blocking buffer: 3% nonfat dry milk in TBST.

Detection: ECL Basic Kit (RM00020).

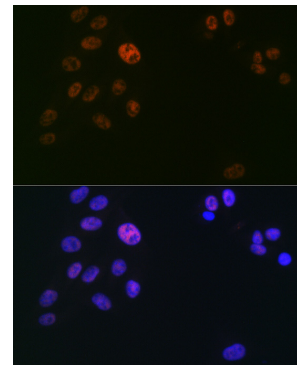
Exposure time: 10s.



Immunofluorescence analysis of C6 cells using SUPT5H/SPT5 Rabbit mAb (A19225) at dilution of 1:100 (40x lens). Secondary antibody: Cy3-conjugated Goat anti-Rabbit IgG (H+L) (AS007) at 1:500 dilution. Blue: DAPI for nuclear staining.



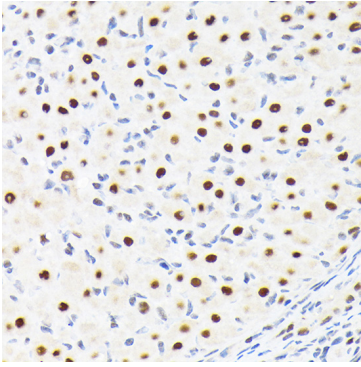
Immunofluorescence analysis of NIH/3T3 cells using SUPT5H/SPT5 Rabbit mAb (A19225) at dilution of 1:100 (40x lens). Secondary antibody: Cy3-conjugated Goat anti-Rabbit IgG (H+L) (AS007) at 1:500 dilution. Blue: DAPI for nuclear staining.



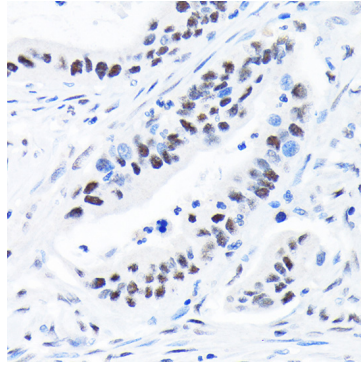
Immunofluorescence analysis of U2OS cells using SUPT5H/SPT5 Rabbit mAb (A19225) at dilution of 1:100 (40x lens). Secondary antibody: Cy3-conjugated Goat anti-Rabbit IgG (H+L) (AS007) at 1:500 dilution. Blue: DAPI for nuclear staining.

## Validation Data

---



Immunohistochemistry analysis of paraffin-embedded Rat ovary using SUPT5H/SPT5 Rabbit mAb (A19225) at dilution of 1:100 (40x lens). Microwave antigen retrieval performed with 0.01M Tris/EDTA Buffer (pH 9.0) prior to IHC staining.



Immunohistochemistry analysis of paraffin-embedded Human colon carcinoma using SUPT5H/SPT5 Rabbit mAb (A19225) at dilution of 1:100 (40x lens). Microwave antigen retrieval performed with 0.01M Tris/EDTA Buffer (pH 9.0) prior to IHC staining.