

# BAT3/BAG6 Rabbit mAb

Catalog No.: A19231 **Recombinant**

## Basic Information

### Observed MW

155kDa

### Calculated MW

119kDa

### Category

Primary antibody

### Applications

ELISA, WB

### Cross-Reactivity

Human, Mouse, Rat

### CloneNo number

ARC2389

### Conjugate

Unmodified

## Recommended Dilutions

WB 1:500 - 1:1000

## Background

This gene was first characterized as part of a cluster of genes located within the human major histocompatibility complex class III region. This gene encodes a nuclear protein that is cleaved by caspase 3 and is implicated in the control of apoptosis. In addition, the protein forms a complex with E1A binding protein p300 and is required for the acetylation of p53 in response to DNA damage. Multiple transcript variants encoding different isoforms have been found for this gene.

## Immunogen Information

### Gene ID

7917

### Swiss Prot

P46379

### Immunogen

A synthetic peptide corresponding to a sequence within amino acids 1033-1132 of human BAT3/BAG6 (P46379).

### Synonyms

G3; BAT3; BAG-6; D6S52E; BAT3/BAG6

## Contact

☎ | 400-999-6126

✉ | [cn.market@abclonal.com.cn](mailto:cn.market@abclonal.com.cn)

🌐 | [www.abclonal.com.cn](http://www.abclonal.com.cn)

## Product Information

### Source

Rabbit

### Isotype

IgG

### Purification

Affinity purification

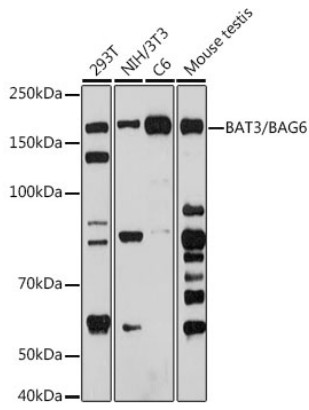
### Storage

Store at -20°C. Avoid freeze / thaw cycles.

Buffer: PBS with 0.02% sodium azide, 0.05% BSA, 50% glycerol, pH7.3.

## Validation Data

---



Western blot analysis of extracts of various cell lines, using BAT3/BAG6 antibody (A19231) at 1:1000 dilution.

Secondary antibody: HRP Goat Anti-Rabbit IgG (H+L) (AS014) at 1:10000 dilution.

Lysates/proteins: 25µg per lane.

Blocking buffer: 3% nonfat dry milk in TBST.

Detection: ECL Basic Kit (RM00020).

Exposure time: 90s.