

PEX19 Rabbit mAb

Catalog No.: A19237 **Recombinant**

Basic Information

Observed MW

35kDa

Calculated MW

33kDa

Category

Primary antibody

Applications

ELISA,WB

Cross-Reactivity

Human

CloneNo number

ARC2395

Conjugate

Unmodified

Recommended Dilutions

WB 1:500 - 1:1000

Background

This gene is necessary for early peroxisomal biogenesis. It acts both as a cytosolic chaperone and as an import receptor for peroxisomal membrane proteins (PMPs). Peroxins (PEXs) are proteins that are essential for the assembly of functional peroxisomes. The peroxisome biogenesis disorders (PBDs) are a group of genetically heterogeneous autosomal recessive, lethal diseases characterized by multiple defects in peroxisome function. These disorders have at least 14 complementation groups, with more than one phenotype being observed for some complementation groups. Although the clinical features of PBD patients vary, cells from all PBD patients exhibit a defect in the import of one or more classes of peroxisomal matrix proteins into the organelle. Defects in this gene are a cause of Zellweger syndrome (ZWS), as well as peroxisome biogenesis disorder complementation group 14 (PBD-CG14), which is also known as PBD-CGJ. Alternative splicing results in multiple transcript variants.

Immunogen Information

Gene ID

5824

Swiss Prot

P40855

Immunogen

A synthetic peptide corresponding to a sequence within amino acids 1-100 of human PEX19 (P40855).

Synonyms

PXF; HK33; PMP1; PMPI; PXMP1; PBD12A; D1S2223E; PEX19

Contact

 | 400-999-6126 | cn.market@abclonal.com.cn | www.abclonal.com.cn

Product Information

Source

Rabbit

Isotype

IgG

Purification

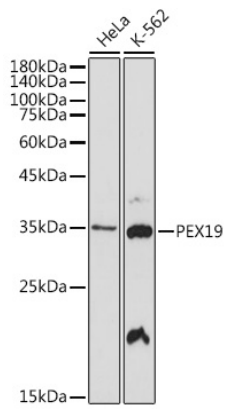
Affinity purification

Storage

Store at -20°C. Avoid freeze / thaw cycles.

Buffer: PBS with 0.02% sodium azide, 0.05% BSA, 50% glycerol, pH7.3.

Validation Data



Western blot analysis of extracts of various cell lines, using PEX19 antibody mAb (A19237) at 1:1000 dilution.

Secondary antibody: HRP Goat Anti-Rabbit IgG (H+L) (AS014) at 1:10000 dilution.

Lysates/proteins: 25µg per lane.

Blocking buffer: 3% nonfat dry milk in TBST.

Detection: ECL Basic Kit (RM00020).

Exposure time: 30s.