

XPB/ERCC2 Rabbit mAb

Catalog No.: A19241 **Recombinant**

Basic Information

Observed MW

80kDa

Calculated MW

87kDa

Category

Primary antibody

Applications

ELISA, WB, IHC-P

Cross-Reactivity

Human, Mouse, Rat

CloneNo number

ARC2401

Background

The nucleotide excision repair pathway is a mechanism to repair damage to DNA. The protein encoded by this gene is involved in transcription-coupled nucleotide excision repair and is an integral member of the basal transcription factor BTF2/TFIIH complex. The gene product has ATP-dependent DNA helicase activity and belongs to the RAD3/XPB subfamily of helicases. Defects in this gene can result in three different disorders, the cancer-prone syndrome xeroderma pigmentosum complementation group D, trichothiodystrophy, and Cockayne syndrome. Alternatively spliced transcript variants encoding different isoforms have been found for this gene.

Recommended Dilutions

WB 1:500 - 1:1000**IHC-P** 1:50 - 1:200

Immunogen Information

Gene ID

2068

Swiss Prot

P18074

Immunogen

A synthetic peptide corresponding to a sequence within amino acids 600-700 of human XPB/ERCC2 (P18074).

Synonyms

EM9; TTD; XPB; TTD1; COFS2; TFIIH; XPB/ERCC2

Contact

 | 400-999-6126 | cn.market@abclonal.com.cn | www.abclonal.com.cn

Product Information

Source

Rabbit

Isotype

IgG

Purification

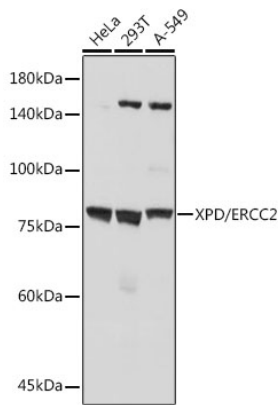
Affinity purification

Storage

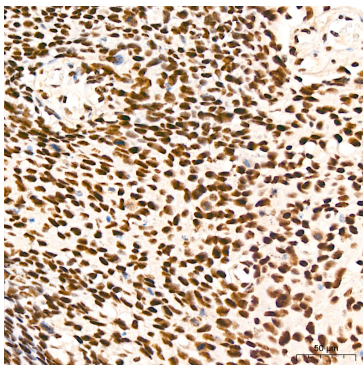
Store at -20°C. Avoid freeze / thaw cycles.

Buffer: PBS with 0.02% sodium azide, 0.05% BSA, 50% glycerol, pH7.3.

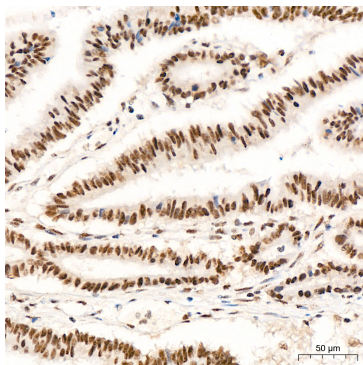
Validation Data



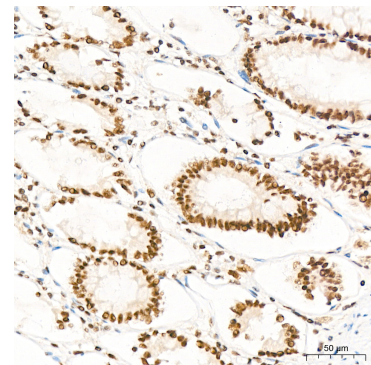
Western blot analysis of various lysates using XPD/ERCC2 Rabbit mAb (A19241) at 1:1000 dilution. Secondary antibody: HRP Goat Anti-Rabbit IgG (H+L) (AS014) at 1:10000 dilution. Lysates/proteins: 25µg per lane. Blocking buffer: 3% nonfat dry milk in TBST. Detection: ECL Basic Kit (RM00020). Exposure time: 10s.



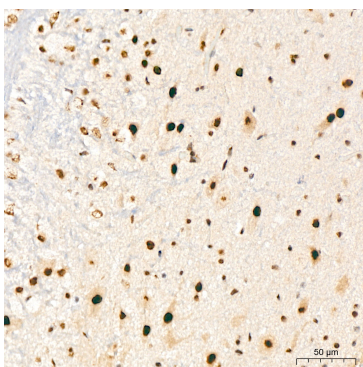
Immunohistochemistry analysis of XPD/ERCC2 in paraffin-embedded human cervix cancer tissue using XPD/ERCC2 Rabbit mAb (A19241) at a dilution of 1:200 (40x lens). High pressure antigen retrieval was performed with 0.01 M Tris-EDTA buffer (pH 9.0) prior to IHC staining.



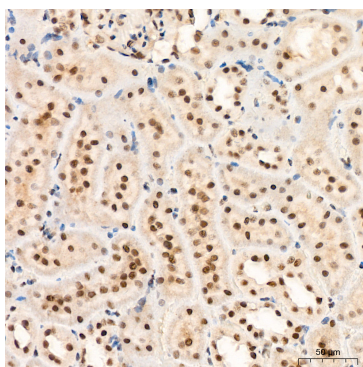
Immunohistochemistry analysis of XPD/ERCC2 in paraffin-embedded human colon carcinoma tissue using XPD/ERCC2 Rabbit mAb (A19241) at a dilution of 1:200 (40x lens). High pressure antigen retrieval was performed with 0.01 M Tris-EDTA buffer (pH 9.0) prior to IHC staining.



Immunohistochemistry analysis of XPD/ERCC2 in paraffin-embedded human colon tissue using XPD/ERCC2 Rabbit mAb (A19241) at a dilution of 1:200 (40x lens). High pressure antigen retrieval was performed with 0.01 M Tris-EDTA buffer (pH 9.0) prior to IHC staining.



Immunohistochemistry analysis of XPD/ERCC2 in paraffin-embedded mouse brain tissue using XPD/ERCC2 Rabbit mAb (A19241) at a dilution of 1:200 (40x lens). High pressure antigen retrieval was performed with 0.01 M Tris-EDTA buffer (pH 9.0) prior to IHC staining.



Immunohistochemistry analysis of XPD/ERCC2 in paraffin-embedded rat kidney tissue using XPD/ERCC2 Rabbit mAb (A19241) at a dilution of 1:200 (40x lens). High pressure antigen retrieval was performed with 0.01 M Tris-EDTA buffer (pH 9.0) prior to IHC staining.