

# beta glucuronidase (GUSB) Rabbit mAb

Catalog No.: A19248 **Recombinant**

## Basic Information

### Observed MW

75kDa

### Calculated MW

75kDa

### Category

Primary antibody

### Applications

ELISA, WB

### Cross-Reactivity

Human

### CloneNo number

ARC2408

## Background

This gene encodes a hydrolase that degrades glycosaminoglycans, including heparan sulfate, dermatan sulfate, and chondroitin-4,6-sulfate. The enzyme forms a homotetramer that is localized to the lysosome. Mutations in this gene result in mucopolysaccharidosis type VII. Alternative splicing results in multiple transcript variants. There are many pseudogenes of this locus in the human genome.

## Recommended Dilutions

WB 1:500 - 1:1000

## Immunogen Information

### Gene ID

2990

### Swiss Prot

P08236

### Immunogen

A synthetic peptide corresponding to a sequence within amino acids 1-100 of human beta glucuronidase (GUSB) (NP\_000172.2).

### Synonyms

BG; MPS7; beta glucuronidase (GUSB)

## Contact

☎ | 400-999-6126

✉ | [cn.market@abclonal.com.cn](mailto:cn.market@abclonal.com.cn)

🌐 | [www.abclonal.com.cn](http://www.abclonal.com.cn)

## Product Information

### Source

Rabbit

### Isotype

IgG

### Purification

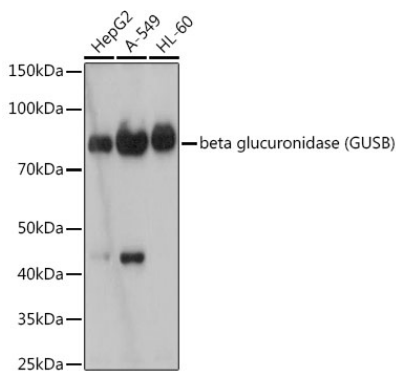
Affinity purification

### Storage

Store at -20°C. Avoid freeze / thaw cycles.

Buffer: PBS with 0.02% sodium azide, 0.05% BSA, 50% glycerol, pH7.3.

# Validation Data



Western blot analysis of extracts of various cell lines, using beta glucuronidase (beta glucuronidase (GUSB)) antibody (A19248) at 1:1000 dilution.  
Secondary antibody: HRP Goat Anti-Rabbit IgG (H+L) (AS014) at 1:10000 dilution.  
Lysates/proteins: 25µg per lane.  
Blocking buffer: 3% nonfat dry milk in TBST.  
Detection: ECL Basic Kit (RM00020).  
Exposure time: 180s.