

DOK1 Rabbit mAb

Catalog No.: A19250 **Recombinant**

Basic Information

Observed MW

62kDa

Calculated MW

52kDa

Category

Primary antibody

Applications

ELISA, WB, IF/ICC

Cross-Reactivity

Human, Mouse, Rat

CloneNo number

ARC2410

Conjugate

Unmodified

Recommended Dilutions

WB 1:500 - 1:1000

IF/ICC 1:50 - 1:200

Background

The protein encoded by this gene is part of a signal transduction pathway downstream of receptor tyrosine kinases. The encoded protein is a scaffold protein that helps form a platform for the assembly of multiprotein signaling complexes. Several transcript variants encoding different isoforms have been found for this gene.

Immunogen Information

Gene ID

1796

Swiss Prot

Q99704

Immunogen

A synthetic peptide corresponding to a sequence within amino acids 382-481 of human DOK1 (Q99704).

Synonyms

pp62; P62DOK; DOK1

Contact

☎ | 400-999-6126

✉ | cn.market@abclonal.com.cn

🌐 | www.abclonal.com.cn

Product Information

Source

Rabbit

Isotype

IgG

Purification

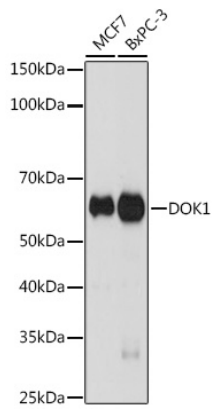
Affinity purification

Storage

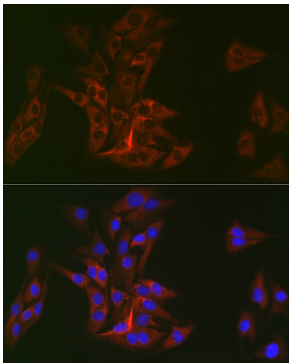
Store at -20°C. Avoid freeze / thaw cycles.

Buffer: PBS with 0.02% sodium azide, 0.05% BSA, 50% glycerol, pH7.3.

Validation Data



Western blot analysis of extracts of various cell lines, using DOK1 antibody (A19250) at 1:1000 dilution.
Secondary antibody: HRP Goat Anti-Rabbit IgG (H+L) (AS014) at 1:10000 dilution.
Lysates/proteins: 25µg per lane.
Blocking buffer: 3% nonfat dry milk in TBST.
Detection: ECL Basic Kit (RM00020).
Exposure time: 90s.



Immunofluorescence analysis of BALB-3T3 cells using DOK1 Rabbit mAb (A19250) at dilution of 1:100 (40x lens). Blue: DAPI for nuclear staining.