

# SMG1 Rabbit mAb

Catalog No.: A19253 **Recombinant**

## Basic Information

### Observed MW

411kDa

### Calculated MW

411kDa

### Category

Primary antibody

### Applications

ELISA, WB

### Cross-Reactivity

Human, Mouse, Rat

### CloneNo number

ARC2417

### Conjugate

Unmodified

## Recommended Dilutions

WB 1:500 - 1:1000

## Background

This gene encodes a protein involved in nonsense-mediated mRNA decay (NMD) as part of the mRNA surveillance complex. The protein has kinase activity and is thought to function in NMD by phosphorylating the regulator of nonsense transcripts 1 protein. Alternatively spliced transcript variants have been described, but their full-length nature has yet to be determined.

## Immunogen Information

### Gene ID

23049

### Swiss Prot

Q96Q15

### Immunogen

A synthetic peptide corresponding to a sequence within amino acids 3562-3661 of human SMG1 (Q96Q15).

### Synonyms

ATX; LIP; 61E3.4; SMG1

## Contact

 | 400-999-6126

 | [cn.market@abclonal.com.cn](mailto:cn.market@abclonal.com.cn)

 | [www.abclonal.com.cn](http://www.abclonal.com.cn)

## Product Information

### Source

Rabbit

### Isotype

IgG

### Purification

Affinity purification

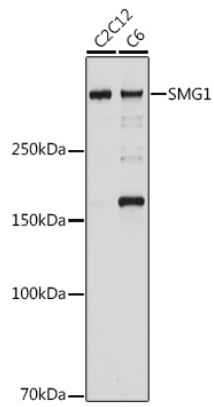
### Storage

Store at -20°C. Avoid freeze / thaw cycles.

Buffer: PBS with 0.02% sodium azide, 0.05% BSA, 50% glycerol, pH7.3.

## Validation Data

---



Western blot analysis of extracts of various cell lines, using SMG1 antibody (A19253) at 1:1000 dilution.  
Secondary antibody: HRP Goat Anti-Rabbit IgG (H+L) (AS014) at 1:10000 dilution.  
Lysates/proteins: 25µg per lane.  
Blocking buffer: 3% nonfat dry milk in TBST.  
Detection: ECL Basic Kit (RM00020).  
Exposure time: 10s.