

Placental lactogen (CSH1) Rabbit mAb

Catalog No.: A19258 Recombinant

Basic Information

Observed MW

Refer to figures

Calculated MW

25kDa

Category

Primary antibody

Applications

IF-P,ELISA

Cross-Reactivity

Human

CloneNo number

ARC2426

Background

The protein encoded by this gene is a member of the somatotropin/prolactin family of hormones and plays an important role in growth control. The gene is located at the growth hormone locus on chromosome 17 along with four other related genes in the same transcriptional orientation; an arrangement which is thought to have evolved by a series of gene duplications. Although the five genes share a remarkably high degree of sequence identity, they are expressed selectively in different tissues. Alternative splicing generates additional isoforms of each of the five growth hormones, leading to further diversity and potential for specialization. This particular family member is expressed mainly in the placenta and utilizes multiple transcription initiation sites. Expression of the identical mature proteins for chorionic somatomammotropin hormones 1 and 2 is upregulated during development, although the ratio of 1 to 2 increases by term. Mutations in this gene result in placental lactogen deficiency and Silver-Russell syndrome.

Recommended Dilutions

IF-P 1:50 - 1:200

ELISA Recommended starting concentration is 1 µg/mL. Please optimize the concentration based on your specific assay requirements.

Immunogen Information

Gene ID

1442

Swiss Prot

P01243

Immunogen

Synthetic peptide. This information is considered to be commercially sensitive.

Synonyms

PL; CSA; CS-1; CSMT; GHB3; hCS-1; hCS-A; Placental lactogen (CSH1)

Contact

 | 400-999-6126

 | cn.market@abclonal.com.cn
 | www.abclonal.com.cn

Product Information

Source

Rabbit

Isotype

IgG

Purification

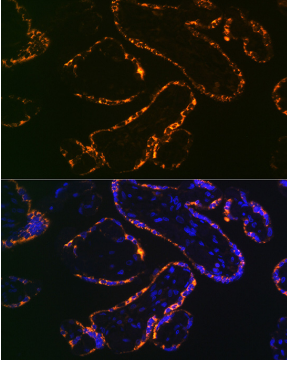
Affinity purification

Storage

Store at -20°C. Avoid freeze / thaw cycles.

Buffer: PBS containing 50% glycerol and 0.05% BSA, preserved with proclin300 or sodium azide (as specified on the Certificate of Analysis), pH 7.3.

Validation Data



Immunofluorescence analysis of paraffin-embedded human placenta using Placental lactogen (CSH1) (CSH1) Rabbit mAb (A19258) at dilution of 1:100 (40x lens). Secondary antibody: Cy3-conjugated Goat anti-Rabbit IgG (H+L) (AS007) at 1:500 dilution. Blue: DAPI for nuclear staining.