

# ATP1A2 Rabbit mAb

Catalog No.: A19278

Recombinant

1 Publications

## Basic Information

**Observed MW**

100kDa

**Calculated MW**

112kDa

**Category**

Primary antibody

**Applications**

ELISA, WB

**Cross-Reactivity**

Mouse, Rat

**CloneNo number**

ARC2458

**Conjugate**

Unmodified

## Recommended Dilutions

WB 1:500 - 1:1000

## Background

The protein encoded by this gene belongs to the family of P-type cation transport ATPases, and to the subfamily of Na<sup>+</sup>/K<sup>+</sup> -ATPases. Na<sup>+</sup>/K<sup>+</sup> -ATPase is an integral membrane protein responsible for establishing and maintaining the electrochemical gradients of Na and K ions across the plasma membrane. These gradients are essential for osmoregulation, for sodium-coupled transport of a variety of organic and inorganic molecules, and for electrical excitability of nerve and muscle. This enzyme is composed of two subunits, a large catalytic subunit (alpha) and a smaller glycoprotein subunit (beta). The catalytic subunit of Na<sup>+</sup>/K<sup>+</sup> -ATPase is encoded by multiple genes. This gene encodes an alpha 2 subunit. Mutations in this gene result in familial basilar or hemiplegic migraines, and in a rare syndrome known as alternating hemiplegia of childhood.

## Immunogen Information

**Gene ID**

477

**Swiss Prot**

P50993

**Immunogen**

A synthetic peptide corresponding to a sequence within amino acids 1-100 of human ATP1A2 (P50993).

**Synonyms**

FHM2; MHP2; DEE98; FARIMPD; ATP1A2

## Contact

 | 400-999-6126 | [cn.market@abclonal.com.cn](mailto:cn.market@abclonal.com.cn) | [www.abclonal.com.cn](http://www.abclonal.com.cn)

## Product Information

**Source**

Rabbit

**Isotype**

IgG

**Purification**

Affinity purification

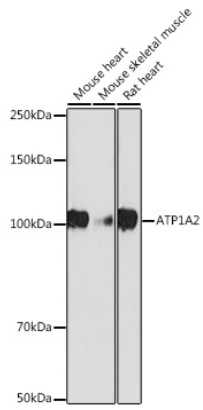
**Storage**

Store at -20°C. Avoid freeze / thaw cycles.

Buffer: PBS with 0.02% sodium azide, 0.05% BSA, 50% glycerol, pH7.3.

## Validation Data

---



Western blot analysis of extracts of various cell lines, using ATP1A2 antibody (A19278) at 1:1000 dilution.  
Secondary antibody: HRP Goat Anti-Rabbit IgG (H+L) (AS014) at 1:10000 dilution.  
Lysates/proteins: 25µg per lane.  
Blocking buffer: 3% nonfat dry milk in TBST.  
Detection: ECL Basic Kit (RM00020).  
Exposure time: 180s.