

# ATRIP Rabbit mAb

Catalog No.: A19279 **Recombinant**

## Basic Information

### Observed MW

90kDa

### Calculated MW

86kDa

### Category

Primary antibody

### Applications

ELISA, WB

### Cross-Reactivity

Human, Mouse, Rat

### CloneNo number

ARC2460

### Conjugate

Unmodified

## Recommended Dilutions

WB 1:500 - 1:1000

## Background

This gene encodes an essential component of the DNA damage checkpoint. The encoded protein binds to single-stranded DNA coated with replication protein A. The protein also interacts with the ataxia telangiectasia and Rad3 related protein kinase, resulting in its accumulation at intranuclear foci induced by DNA damage. Multiple transcript variants encoding different isoforms have been found for this gene.

## Immunogen Information

### Gene ID

84126

### Swiss Prot

Q8WXE1

### Immunogen

A synthetic peptide corresponding to a sequence within amino acids 200-300 of human ATRIP (Q8WXE1).

### Synonyms

ATRIP; ATR-interacting protein

## Contact

 | 400-999-6126

 | [cn.market@abclonal.com.cn](mailto:cn.market@abclonal.com.cn)

 | [www.abclonal.com.cn](http://www.abclonal.com.cn)

## Product Information

### Source

Rabbit

### Isotype

IgG

### Purification

Affinity purification

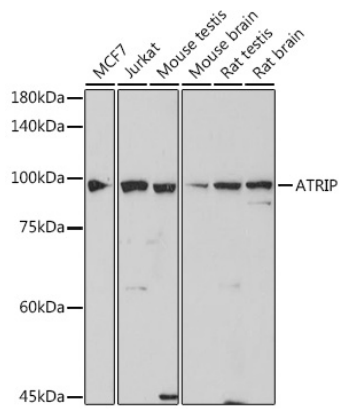
### Storage

Store at -20°C. Avoid freeze / thaw cycles.

Buffer: PBS with 0.02% sodium azide, 0.05% BSA, 50% glycerol, pH7.3.

## Validation Data

---



Western blot analysis of various lysates, using ATRIP antibody (A19279) at 1:1000 dilution.  
Secondary antibody: HRP Goat Anti-Rabbit IgG (H+L) (AS014) at 1:10000 dilution.  
Lysates/proteins: 25 $\mu$ g per lane.  
Blocking buffer: 3% nonfat dry milk in TBST.  
Detection: ECL Basic Kit (RM00020).  
Exposure time: 30s.