

Cytokeratin 12 (KRT12) Rabbit mAb

Catalog No.: A19284 **Recombinant**

Basic Information

Observed MW

54kDa

Calculated MW

54kDa

Category

Primary antibody

Applications

ELISA, WB, IHC-P, IF/ICC

Cross-Reactivity

Mouse, Rat

CloneNo number

ARC2465

Background

KRT12 encodes the type I intermediate filament chain keratin 12, expressed in corneal epithelia. Mutations in this gene lead to Meesmann corneal dystrophy.

Recommended Dilutions

WB	1:100 - 1:500
IHC-P	1:50 - 1:200
IF/ICC	1:50 - 1:200

Immunogen Information

Gene ID

3859

Swiss Prot

Q99456

Immunogen

Recombinant fusion protein containing a sequence corresponding to amino acids 250-494 of human Cytokeratin 12 (KRT12) (NP_000214.1).

Synonyms

K12; MECD1; Cytokeratin 12 (KRT12)

Contact

	400-999-6126
	cn.market@abclonal.com.cn
	www.abclonal.com.cn

Product Information

Source

Rabbit

Isotype

IgG

Purification

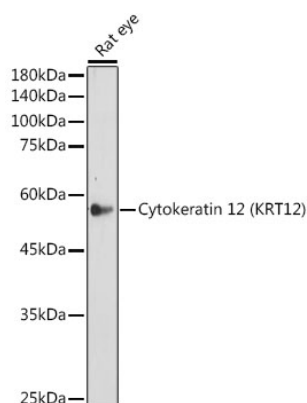
Affinity purification

Storage

Store at -20°C. Avoid freeze / thaw cycles.

Buffer: PBS with 0.02% sodium azide, 0.05% BSA, 50% glycerol, pH7.3.

Validation Data



Western blot analysis of lysates from Rat eye, using Cytokeratin 12 (KRT12) Rabbit mAb (A19284) at 1:500 dilution.

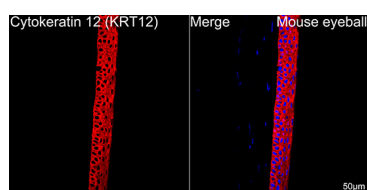
Secondary antibody: HRP Goat Anti-Rabbit IgG (H+L) (AS014) at 1:10000 dilution.

Lysates/proteins: 25µg per lane.

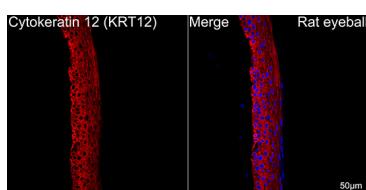
Blocking buffer: 3% nonfat dry milk in TBST.

Detection: ECL Enhanced Kit (RM00021).

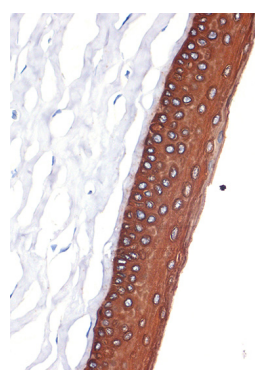
Exposure time: 180s.



Confocal imaging of paraffin-embedded Mouse eyeball tissue using Cytokeratin 12 (KRT12) Rabbit mAb (A19284, dilution 1:200) followed by a further incubation with Cy3 Goat Anti-Rabbit IgG (H+L) (AS007, dilution 1:500) (Red). DAPI was used for nuclear staining (Blue). Objective: 40x. Perform high pressure antigen retrieval with 0.01 M citrate buffer (pH 6.0) prior to IF staining.



Confocal imaging of paraffin-embedded Rat eyeball tissue using Cytokeratin 12 (KRT12) Rabbit mAb (A19284, dilution 1:200) followed by a further incubation with Cy3 Goat Anti-Rabbit IgG (H+L) (AS007, dilution 1:500) (Red). DAPI was used for nuclear staining (Blue). Objective: 40x. Perform high pressure antigen retrieval with 0.01 M citrate buffer (pH 6.0) prior to IF staining.



Immunohistochemistry analysis of Cytokeratin 12 (KRT12) in paraffin-embedded rat cornea using Cytokeratin 12 (KRT12) (KRT12) Rabbit mAb (A19284) at dilution of 1:100 (40x lens). Perform microwave antigen retrieval with 10 mM Tris/EDTA buffer pH 9.0 before commencing with IHC staining protocol.



Immunohistochemistry analysis of Cytokeratin 12 (KRT12) in paraffin-embedded Mouse cornea using Cytokeratin 12 (KRT12) (KRT12) Rabbit mAb (A19284) at dilution of 1:100 (40x lens). Perform microwave antigen retrieval with 10 mM Tris/EDTA buffer pH 9.0 before commencing with IHC staining protocol.