

# EpCAM Rabbit mAb

Catalog No.: A19301 **Recombinant** **7 Publications**

## Basic Information

### Observed MW

Refer to figures

### Calculated MW

35kDa

### Category

Primary antibody

### Applications

WB,IF/ICC,ELISA

### Cross-Reactivity

Human, Mouse, Rat

### CloneNo number

ARC0277

## Background

This gene encodes a carcinoma-associated antigen and is a member of a family that includes at least two type I membrane proteins. This antigen is expressed on most normal epithelial cells and gastrointestinal carcinomas and functions as a homotypic calcium-independent cell adhesion molecule. The antigen is being used as a target for immunotherapy treatment of human carcinomas. Mutations in this gene result in congenital tufting enteropathy.

## Recommended Dilutions

**WB** 1:500 - 1:2000

**IF/ICC** 1:50 - 1:200

**ELISA** Recommended starting concentration is 1 µg/mL. Please optimize the concentration based on your specific assay requirements.

## Immunogen Information

### Gene ID

4072

### Swiss Prot

P16422

### Immunogen

A synthetic peptide corresponding to a sequence within amino acids 215-314 of human EpCAM (P16422).

### Synonyms

ESA; KSA; M4S1; MK-1; DIAR5; EGP-2; EGP40; KS1/4; MIC18; TROP1; BerEp4; EGP314; HNPPC8; LYNCH8; MOC-31; Ber-Ep4; TACSTD1; EpCAM

## Contact

☎ | 400-999-6126

✉ | [cn.market@abclonal.com.cn](mailto:cn.market@abclonal.com.cn)

🌐 | [www.abclonal.com.cn](http://www.abclonal.com.cn)

## Product Information

### Source

Rabbit

### Isotype

IgG

### Purification

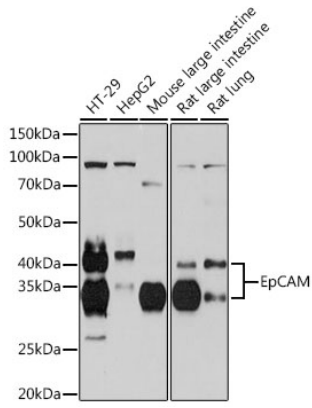
Affinity purification

### Storage

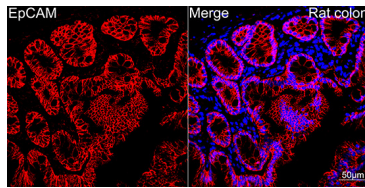
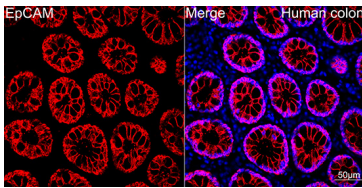
Store at -20°C. Avoid freeze / thaw cycles.

Buffer: PBS with 0.02% sodium azide,0.05% BSA,50% glycerol,pH7.3.

## Validation Data



Western blot analysis of various lysates using EpCAM Rabbit mAb (A19301) at 1:1000 dilution. Secondary antibody: HRP-conjugated Goat anti-Rabbit IgG (H+L) (AS014) at 1:10000 dilution. Lysates/proteins: 25µg per lane. Blocking buffer: 3% nonfat dry milk in TBST. Detection: ECL Basic Kit (RM00020). Exposure time: 3min.



Confocal imaging of Human colon using EpCAM Rabbit mAb (A19301, dilution 1:50) (Red). DAPI was used for nuclear staining (blue). Objective: 40x.

Confocal imaging of Rat colon using EpCAM Rabbit mAb (A19301, dilution 1:50) (Red). DAPI was used for nuclear staining (blue). Objective: 40x.