

# PP2A-B56 $\beta$ /PR61 $\beta$ /PPP2R5B Rabbit pAb

**Catalog No.: A19332**

## Basic Information

**Observed MW**

57kDa

**Calculated MW**

57kDa

**Category**

Primary antibody

**Applications**

ELISA, WB

**Cross-Reactivity**

Rat

## Background

The product of this gene belongs to the phosphatase 2A regulatory subunit B family. Protein phosphatase 2A is one of the four major Ser/Thr phosphatases, and it is implicated in the negative control of cell growth and division. It consists of a common heteromeric core enzyme, which is composed of a catalytic subunit and a constant regulatory subunit, that associates with a variety of regulatory subunits. The B regulatory subunit might modulate substrate selectivity and catalytic activity. This gene encodes a beta isoform of the regulatory subunit B56 subfamily.

## Recommended Dilutions

**WB** 1:500 - 1:1000

## Immunogen Information

**Gene ID**

5526

**Swiss Prot**

Q15173

**Immunogen**

A synthetic peptide corresponding to a sequence within amino acids 400-497 of human PP2A-B56 $\beta$ /PR61 $\beta$ /PPP2R5B (NP\_006235.1).

**Synonyms**B56B; PR61B; B56beta; PP2A-B56 $\beta$ /PR61 $\beta$ /PPP2R5B

## Contact

 | 400-999-6126 | [cn.market@abclonal.com.cn](mailto:cn.market@abclonal.com.cn) | [www.abclonal.com.cn](http://www.abclonal.com.cn)

## Product Information

**Source**

Rabbit

**Isotype**

IgG

**Purification**

Affinity purification

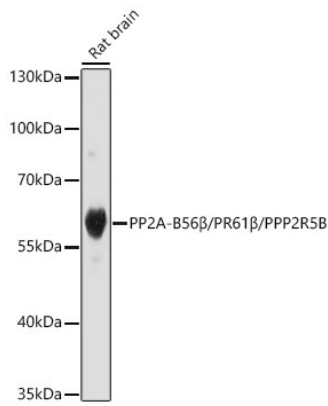
**Storage**

Store at -20°C. Avoid freeze / thaw cycles.

Buffer: PBS with 0.01% thimerosal, 50% glycerol, pH7.3.

## Validation Data

---



Western blot analysis of lysates from Rat brain using PP2A-B56β/PR61β/PPP2R5B Rabbit pAb(A19332) at 1:1000 dilution.

Secondary antibody: HRP Goat Anti-Rabbit IgG (H+L) (AS014) at 1:10000 dilution.

Lysates/proteins: 25 µg per lane.

Blocking buffer: 3% nonfat dry milk in TBST.

Detection: ECL Basic Kit (RM00020).

Exposure time: 180s.