

# [KD Validated] RAB27A Rabbit pAb

Catalog No.: A1934 **4 Publications**

## Basic Information

### Observed MW

27kDa

### Calculated MW

25kDa

### Category

Primary antibody

### Applications

ELISA, WB, IF/ICC

### Cross-Reactivity

Human, Mouse

## Background

The protein encoded by this gene belongs to the small GTPase superfamily, Rab family. The protein is membrane-bound and may be involved in protein transport and small GTPase mediated signal transduction. Mutations in this gene are associated with Griscelli syndrome type 2. Alternative splicing occurs at this locus and four transcript variants encoding the same protein have been identified.

## Recommended Dilutions

|               |                |
|---------------|----------------|
| <b>WB</b>     | 1:500 - 1:1000 |
| <b>IF/ICC</b> | 1:50 - 1:200   |

## Immunogen Information

### Gene ID

5873

### Swiss Prot

P51159

### Immunogen

Recombinant fusion protein containing a sequence corresponding to amino acids 1-221 of human RAB27A (NP\_899057.1).

### Synonyms

GS2; RAM; RAB27; HsT18676; [KD Validated] RAB27A

## Contact

|  |  |
|--|--|
|  | 400-999-6126   |
|  | <a href="mailto:cn.market@abclonal.com.cn">cn.market@abclonal.com.cn</a> |
|  | <a href="http://www.abclonal.com.cn">www.abclonal.com.cn</a>             |

## Product Information

### Source

Rabbit

### Isotype

IgG

### Purification

Affinity purification

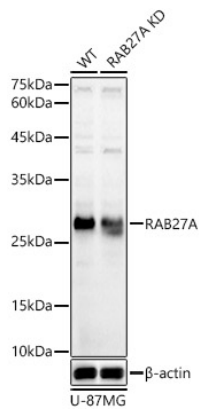
### Storage

Store at -20°C. Avoid freeze / thaw cycles.

Buffer: PBS with 0.02% sodium azide, 50% glycerol, pH 7.3.

## Validation Data

---



Western blot analysis of lysates from wild type (WT) and RAB27A knockdown (KD) U-87MG cells, using [KD Validated] RAB27A Rabbit pAb (A1934) at 1:1000 dilution.

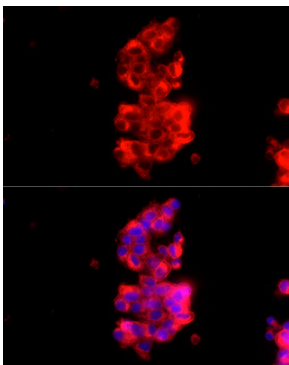
Secondary antibody: HRP Goat Anti-Rabbit IgG (H+L) (AS014) at 1:10000 dilution.

Lysates/proteins: 25 µg per lane.

Blocking buffer: 3% nonfat dry milk in TBST.

Detection: ECL Basic Kit (RM00020).

Exposure time: 10s.



Immunofluorescence analysis of HepG2 cells using [KD Validated] RAB27A Rabbit pAb (A1934) at dilution of 1:100 (40x lens). Secondary antibody: Cy3 Goat Anti-Rabbit IgG (H+L) (AS007) at 1:500 dilution. Blue: DAPI for nuclear staining.