

# Prostatic Acid Phosphatase (ACPP) Rabbit pAb

**Catalog No.: A1937**

## Basic Information

### Observed MW

50kDa

### Calculated MW

45kDa

### Category

Primary antibody

### Applications

ELISA, WB, IHC-P

### Cross-Reactivity

Human, Mouse, Rat

## Background

This gene encodes an enzyme that catalyzes the conversion of orthophosphoric monoester to alcohol and orthophosphate. It is synthesized under androgen regulation and is secreted by the epithelial cells of the prostate gland. An alternatively spliced transcript variant encoding a longer isoform has been found for this gene. This isoform contains a transmembrane domain and is localized in the plasma membrane-endosomal-lysosomal pathway.

## Recommended Dilutions

**WB** 1:100 - 1:500

**IHC-P** 1:50 - 1:200

## Immunogen Information

### Gene ID

55

### Swiss Prot

P15309

### Immunogen

Recombinant fusion protein containing a sequence corresponding to amino acids 33-386 of human PAP/Prostatic Acid Phosphatase (ACPP) (NP\_001090.2).

### Synonyms

ACPP; 5'-NT; ACP-3; TM-PAP; Prostatic Acid Phosphatase (ACPP)

## Contact

☎ | 400-999-6126

✉ | [cn.market@abclonal.com.cn](mailto:cn.market@abclonal.com.cn)

🌐 | [www.abclonal.com.cn](http://www.abclonal.com.cn)

## Product Information

### Source

Rabbit

### Isotype

IgG

### Purification

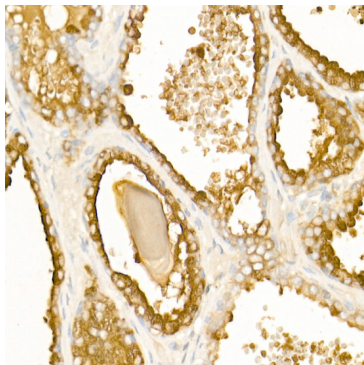
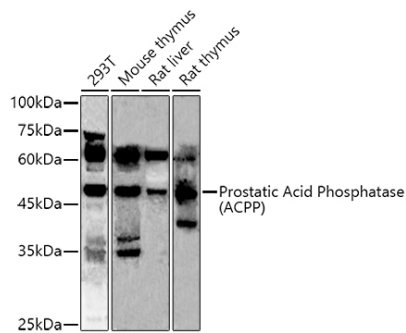
Affinity purification

### Storage

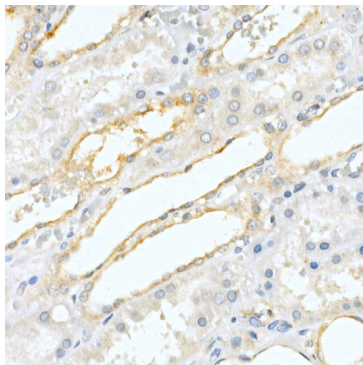
Store at -20°C. Avoid freeze / thaw cycles.

Buffer: PBS with 0.02% sodium azide, 50% glycerol, pH7.3.

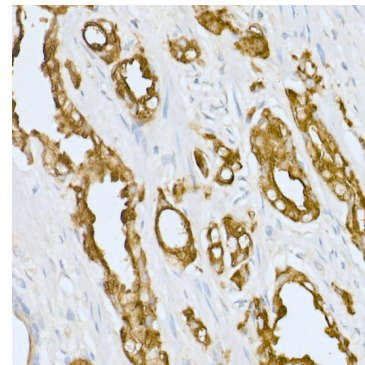
## Validation Data



Immunohistochemistry analysis of paraffin-embedded Human benign prostatic hyperplasia using Prostatic Acid Phosphatase (ACPP) Rabbit pAb (A1937) at dilution of 1:50 (40x lens). Perform high pressure antigen retrieval with 10 mM citrate buffer pH 6.0 before commencing with IHC staining protocol.



Immunohistochemistry analysis of paraffin-embedded human kidney using Prostatic Acid Phosphatase (ACPP) Rabbit pAb (A1937) at dilution of 1:50 (40x lens). Perform high pressure antigen retrieval with 10 mM citrate buffer pH 6.0 before commencing with IHC staining protocol.



Immunohistochemistry analysis of paraffin-embedded human prostate cancer using Prostatic Acid Phosphatase (ACPP) Rabbit pAb (A1937) at dilution of 1:50 (40x lens). Perform high pressure antigen retrieval with 10 mM citrate buffer pH 6.0 before commencing with IHC staining protocol.