

TIRAP Rabbit pAb

Catalog No.: A1943

Basic Information

Observed MW

Calculated MW

24kDa

Category

Primary antibody

Applications

ELISA, IHC-P

Cross-Reactivity

Human

Background

The innate immune system recognizes microbial pathogens through Toll-like receptors (TLRs), which identify pathogen-associated molecular patterns. Different TLRs recognize different pathogen-associated molecular patterns and all TLRs have a Toll-interleukin 1 receptor (TIR) domain, which is responsible for signal transduction. The protein encoded by this gene is a TIR adaptor protein involved in the TLR4 signaling pathway of the immune system. It activates NF-kappa-B, MAPK1, MAPK3 and JNK, which then results in cytokine secretion and the inflammatory response. Alternative splicing of this gene results in several transcript variants; however, not all variants have been fully described.

Recommended Dilutions

IHC-P 1:50 - 1:200

Immunogen Information

Gene ID

114609

Swiss Prot

P58753

Immunogen

Recombinant fusion protein containing a sequence corresponding to amino acids 1-221 of human TIRAP (NP_001034750.1).

Synonyms

Mal; wyatt; BACTS1; MyD88-2; TIRAP

Contact

☎ | 400-999-6126

✉ | cn.market@abclonal.com.cn

🌐 | www.abclonal.com.cn

Product Information

Source

Rabbit

Isotype

IgG

Purification

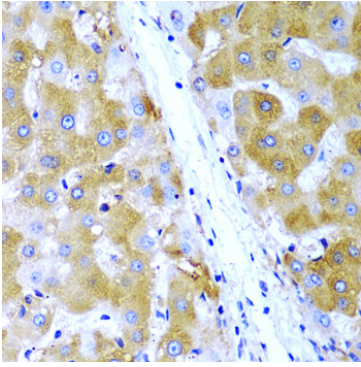
Affinity purification

Storage

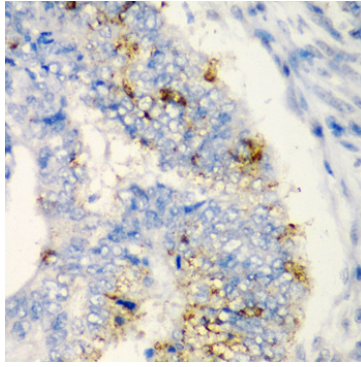
Store at -20°C. Avoid freeze / thaw cycles.

Buffer: PBS with 0.02% sodium azide, 50% glycerol, pH 7.3.

Validation Data



Immunohistochemistry analysis of paraffin-embedded human liver cancer using TIRAP Rabbit pAb (A1943) at dilution of 1:200 (40x lens). Perform microwave antigen retrieval with 10 mM PBS buffer pH 7.2 before commencing with IHC staining protocol.



Immunohistochemistry analysis of paraffin-embedded human colon carcinoma using TIRAP Rabbit pAb (A1943) at dilution of 1:200 (40x lens). Perform microwave antigen retrieval with 10 mM PBS buffer pH 7.2 before commencing with IHC staining protocol.