

# LC3B Rabbit pAb

**Catalog No.: A19434**

## Basic Information

### Observed MW

14kDa,16kDa

### Calculated MW

15kDa

### Category

Primary antibody

### Applications

ELISA,WB,IF/ICC,IHC-P

### Cross-Reactivity

Human, Mouse, Rat

## Background

The product of this gene is a subunit of neuronal microtubule-associated MAP1A and MAP1B proteins, which are involved in microtubule assembly and important for neurogenesis. Studies on the rat homolog implicate a role for this gene in autophagy, a process that involves the bulk degradation of cytoplasmic component.

## Recommended Dilutions

<b>WB</b>	1:500 - 1:2000
<b>IF/ICC</b>	1:50 - 1:200
<b>IHC-P</b>	1:50 - 1:200

## Immunogen Information

### Gene ID

81631

### Swiss Prot

Q9GZQ8

### Immunogen

A synthetic peptide corresponding to a sequence within amino acids 1-100 of human LC3B (NP\_073729.1).

### Synonyms

LC3B; ATG8F; MAP1LC3B-a; MAP1A/1BLC3

## Contact

	400-999-6126
	<a href="mailto:cn.market@abclonal.com.cn">cn.market@abclonal.com.cn</a>
	<a href="http://www.abclonal.com.cn">www.abclonal.com.cn</a>

## Product Information

### Source

Rabbit

### Isotype

IgG

### Purification

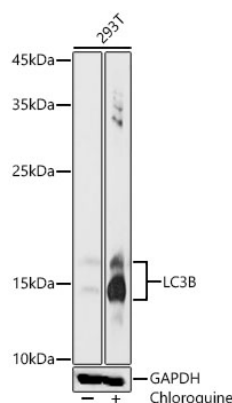
Affinity purification

### Storage

Store at -20°C. Avoid freeze / thaw cycles.

Buffer: PBS with 0.01% thimerosal,50% glycerol,pH7.3.

## Validation Data



Western blot analysis of lysates from 293T cells using LC3B Rabbit pAb (A19434) at 1:1000 dilution. 293T cells were treated by Chloroquine (50  $\mu$ M) at 37°C for 20 hours.

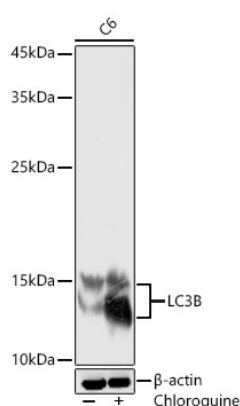
Secondary antibody: HRP Goat Anti-Rabbit IgG (H+L) (AS014) at 1:10000 dilution.

Lysates/proteins: 25  $\mu$ g per lane.

Blocking buffer: 3% nonfat dry milk in TBST.

Detection: ECL Basic Kit (RM00020).

Exposure time: 180s.



Western blot analysis of lysates from C6 cells using LC3B Rabbit pAb (A19434) at 1:1000 dilution. C6 cells were treated by Chloroquine (50  $\mu$ M) at 37°C for 20 hours.

Chloroquine

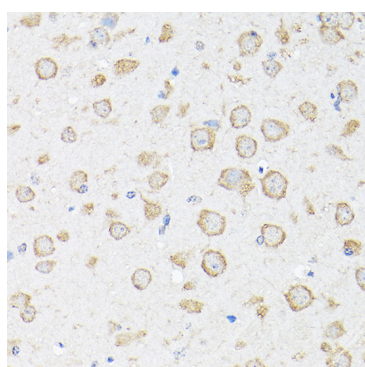
Secondary antibody: HRP Goat Anti-Rabbit IgG (H+L) (AS014) at 1:10000 dilution.

Lysates/proteins: 25  $\mu$ g per lane.

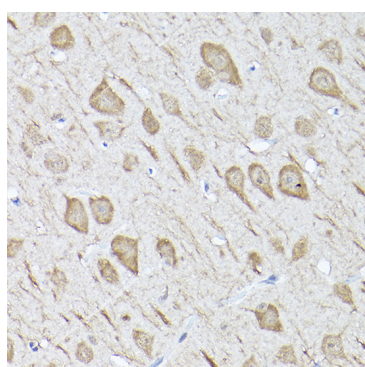
Blocking buffer: 3% nonfat dry milk in TBST.

Detection: ECL Basic Kit (RM00020).

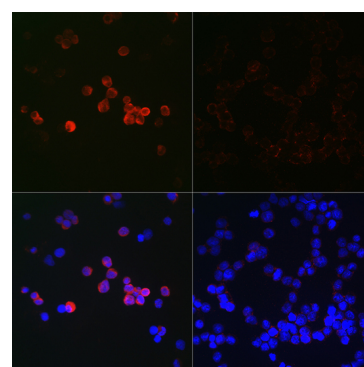
Exposure time: 90s.



Immunohistochemistry analysis of LC3B in paraffin-embedded mouse brain using LC3B Rabbit pAb (A19434) at dilution of 1:100 (40x lens). Perform high pressure antigen retrieval with 10 mM citrate buffer pH 6.0 before commencing with IHC staining protocol.



Immunohistochemistry analysis of LC3B in paraffin-embedded rat brain using LC3B Rabbit pAb (A19434) at dilution of 1:100 (40x lens). Perform high pressure antigen retrieval with 10 mM citrate buffer pH 6.0 before commencing with IHC staining protocol.



Immunofluorescence analysis of 293T cells using LC3B Rabbit pAb (A19434) at dilution of 1:100 (40x lens). 293T cells were treated by Chloroquine (50  $\mu$ M) at 37°C for 20 hours. Secondary antibody: Cy3 Goat Anti-Rabbit IgG (H+L) (AS007) at 1:500 dilution. Blue: DAPI for nuclear staining.