

Glypican 3 (GPC3) Rabbit pAb

Catalog No.: A1946

Basic Information

Observed MW

66kDa

Calculated MW

66kDa

Category

Primary antibody

Applications

ELISA, WB, FC

Cross-Reactivity

Human, Mouse, Rat

Background

Cell surface heparan sulfate proteoglycans are composed of a membrane-associated protein core substituted with a variable number of heparan sulfate chains. Members of the glypican-related integral membrane proteoglycan family (GRIPS) contain a core protein anchored to the cytoplasmic membrane via a glycosyl phosphatidylinositol linkage. These proteins may play a role in the control of cell division and growth regulation. The protein encoded by this gene can bind to and inhibit the dipeptidyl peptidase activity of CD26, and it can induce apoptosis in certain cell types. Deletion mutations in this gene are associated with Simpson-Golabi-Behme syndrome, also known as Simpson dysmorphia syndrome. Alternative splicing results in multiple transcript variants.

Recommended Dilutions

WB 1:500 - 1:1000**FC** 1:50 - 1:200

Immunogen Information

Gene ID

2719

Swiss Prot

P51654

Immunogen

A synthetic peptide corresponding to a sequence within amino acids 481-580 of human Glypican 3 (GPC3) (NP_004475.1).

Synonyms

SGB; DGSX; MXR7; SDYS; SGBS; OCI-5; SGBS1; GTR2-2; Glypican 3 (GPC3)

Contact

 | 400-999-6126 | cn.market@abclonal.com.cn | www.abclonal.com.cn

Product Information

Source

Rabbit

Isotype

IgG

Purification

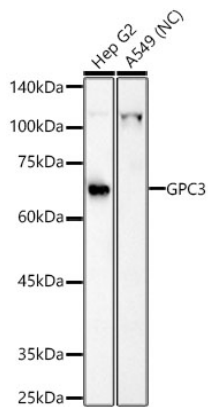
Affinity purification

Storage

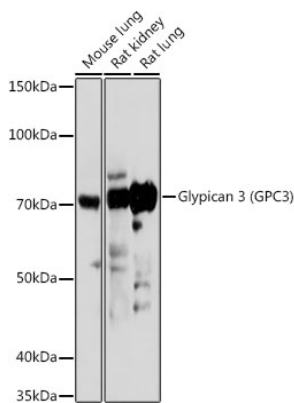
Store at -20°C. Avoid freeze / thaw cycles.

Buffer: PBS with 0.05% proclin300, 50% glycerol, pH7.3.

Validation Data



Western blot analysis of various lysates, using GPC3 antibody (A1946) at 1:800 dilution. Secondary antibody: HRP Goat Anti-Rabbit IgG (H+L) (AS014) at 1:10000 dilution. Lysates/proteins: 25µg per lane. Blocking buffer: 3% nonfat dry milk in TBST. Detection: ECL Basic Kit (RM00020). Negative control (NC): A549. Exposure time: 90s.



Western blot analysis of extracts of various cell lines, using Glypican 3 (GPC3) (GPC3) antibody (A1946) at 1:1000 dilution. Secondary antibody: HRP Goat Anti-Rabbit IgG (H+L) (AS014) at 1:10000 dilution. Lysates/proteins: 25µg per lane. Blocking buffer: 3% nonfat dry milk in TBST. Detection: ECL Basic Kit (RM00020). Exposure time: 180s.