

SH3KBP1 Rabbit pAb

Catalog No.: A1952 **1 Publications**

Basic Information

Observed MW

73kDa

Calculated MW

73kDa

Category

Primary antibody

Applications

ELISA,WB

Cross-Reactivity

Human, Mouse

Background

This gene encodes an adapter protein that contains one or more N-terminal Src homology domains, a proline rich region and a C-terminal coiled-coil domain. The encoded protein facilitates protein-protein interactions and has been implicated in numerous cellular processes including apoptosis, cytoskeletal rearrangement, cell adhesion and in the regulation of clathrin-dependent endocytosis. Alternate splicing results in multiple transcript variants encoding distinct isoforms.

Recommended Dilutions

WB 1:500 - 1:2000

Immunogen Information

Gene ID

30011

Swiss Prot

Q96B97

Immunogen

Recombinant fusion protein containing a sequence corresponding to amino acids 136-271 of human SH3KBP1 (NP_114098.1).

Synonyms

HSB1; AGMX2; CIN85; GIG10; HSB-1; IMD61; MIG18; CD2BP3; SH3KBP1

Contact

 | 400-999-6126

 | cn.market@abclonal.com.cn

 | www.abclonal.com.cn

Product Information

Source

Rabbit

Isotype

IgG

Purification

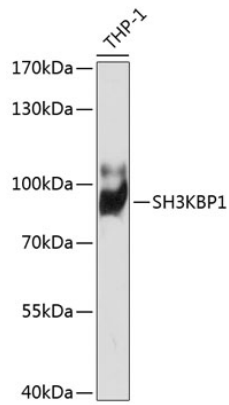
Affinity purification

Storage

Store at -20°C. Avoid freeze / thaw cycles.

Buffer: PBS with 0.01% thimerosal, 50% glycerol, pH7.3.

Validation Data



Western blot analysis of lysates from THP-1 cells, using SH3KBP1 Rabbit pAb (A1952) at 1:1000 dilution.
Secondary antibody: HRP Goat Anti-Rabbit IgG (H+L) (AS014) at 1:10000 dilution.
Lysates/proteins: 25µg per lane.
Blocking buffer: 3% nonfat dry milk in TBST.
Detection: ECL Basic Kit (RM00020).
Exposure time: 90s.