

# KAP1/TRIM28 Rabbit mAb

Catalog No.: A19568 **Recombinant** **2 Publications**

## Basic Information

### Observed MW

110kDa

### Calculated MW

89kDa

### Category

Primary antibody

### Applications

WB,IHC-P,IP,ELISA

### Cross-Reactivity

Human, Mouse, Rat

### CloneNo number

ARC0047

## Background

The protein encoded by this gene mediates transcriptional control by interaction with the Kruppel-associated box repression domain found in many transcription factors. The protein localizes to the nucleus and is thought to associate with specific chromatin regions. The protein is a member of the tripartite motif family. This tripartite motif includes three zinc-binding domains, a RING, a B-box type 1 and a B-box type 2, and a coiled-coil region.

## Recommended Dilutions

**WB** 1:1000 - 1:6000

**IHC-P** 1:200 - 1:2000

**IP** 0.5µg-4µg antibody for 200µg-400µg extracts of whole cells

**ELISA** Recommended starting concentration is 1 µg/mL. Please optimize the concentration based on your specific assay requirements.

## Immunogen Information

### Gene ID

10155

### Swiss Prot

Q13263

### Immunogen

A synthetic peptide corresponding to a sequence within amino acids 250-350 of human KAP1/TRIM28 (Q13263).

### Synonyms

KAP1; TF1B; RNF96; TIF1B; PPP1R157; TIF1beta; KAP1/TRIM28

## Contact

☎ | 400-999-6126

✉ | [cn.market@abclonal.com.cn](mailto:cn.market@abclonal.com.cn)

🌐 | [www.abclonal.com.cn](http://www.abclonal.com.cn)

## Product Information

### Source

Rabbit

### Isotype

IgG

### Purification

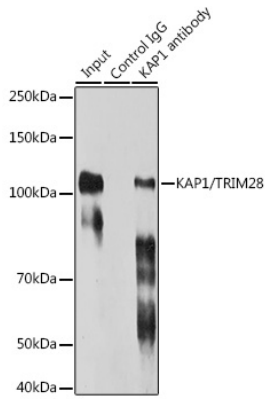
Affinity purification

### Storage

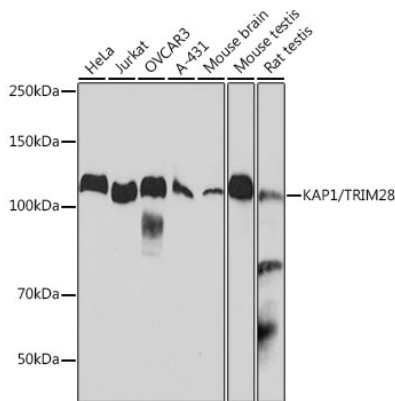
Store at -20°C. Avoid freeze / thaw cycles.

Buffer: PBS with 0.02% sodium azide,0.05% BSA,50% glycerol,pH7.3.

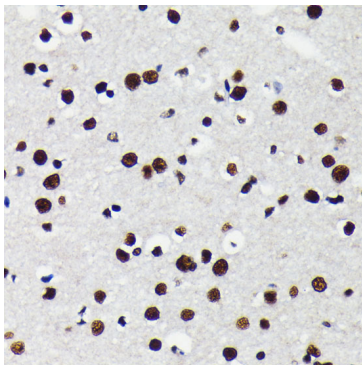
## Validation Data



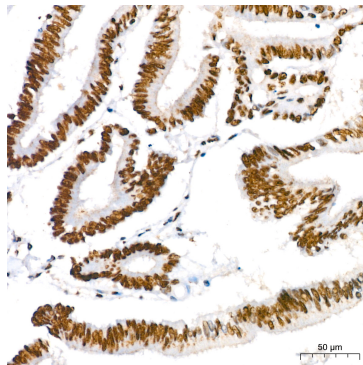
Immunoprecipitation analysis of 300 µg extracts of HeLa cells using 3 µg KAP1/TRIM28 antibody (A19568). Western blot was performed from the immunoprecipitate using KAP1/TRIM28 antibody (A19568) at a dilution of 1:1000.



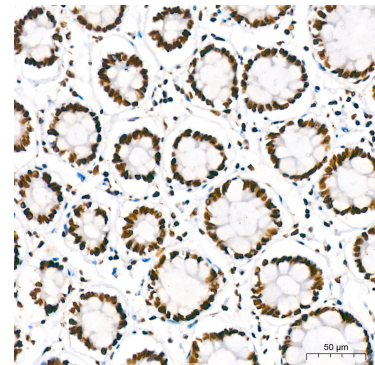
Western blot analysis of various lysates using KAP1/TRIM28 Rabbit mAb (A19568) at 1:1000 dilution. Secondary antibody: HRP-conjugated Goat anti-Rabbit IgG (H+L) (AS014) at 1:10000 dilution. Lysates/proteins: 25µg per lane. Blocking buffer: 3% nonfat dry milk in TBST. Detection: ECL Basic Kit (RM00020). Exposure time: 10s.



Immunohistochemistry analysis of paraffin-embedded Mouse brain using KAP1/TRIM28 Rabbit mAb (A19568) at dilution of 1:100 (40x lens). Microwave antigen retrieval performed with 0.01M PBS Buffer (pH 7.2) prior to IHC staining.

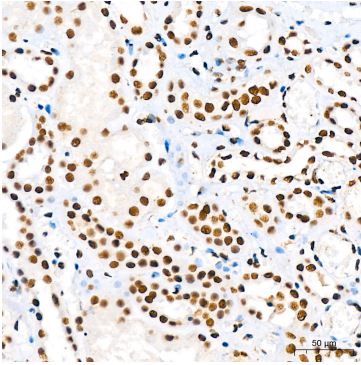


Immunohistochemistry analysis of paraffin-embedded Human colon carcinoma using KAP1/TRIM28 Rabbit mAb (A19568) at dilution of 1:200 (40x lens). High pressure antigen retrieval performed with 0.01M Citrate Bufferr (pH 6.0) prior to IHC staining.

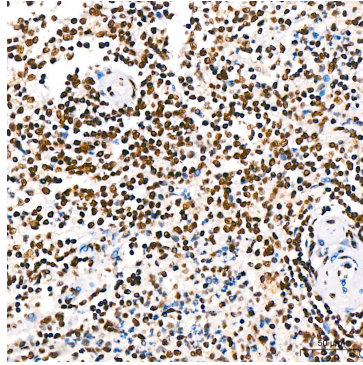


Immunohistochemistry analysis of paraffin-embedded Human colon using KAP1/TRIM28 Rabbit mAb (A19568) at dilution of 1:200 (40x lens). High pressure antigen retrieval performed with 0.01M Citrate Bufferr (pH 6.0) prior to IHC staining.

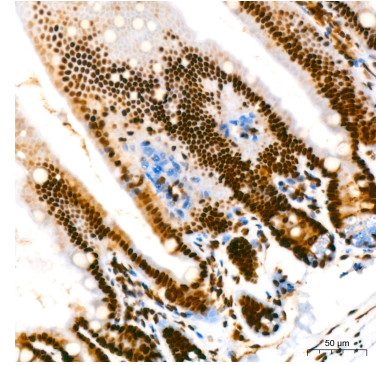
## Validation Data



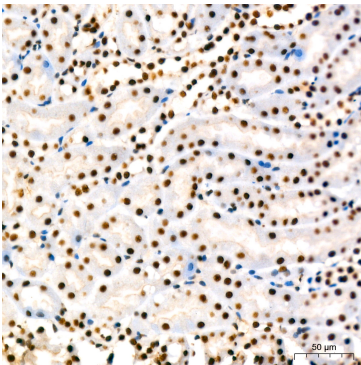
Immunohistochemistry analysis of paraffin-embedded Human kidney using KAP1/TRIM28 Rabbit mAb (A19568) at dilution of 1:200 (40x lens). High pressure antigen retrieval performed with 0.01M Citrate Bufferr (pH 6.0) prior to IHC staining.



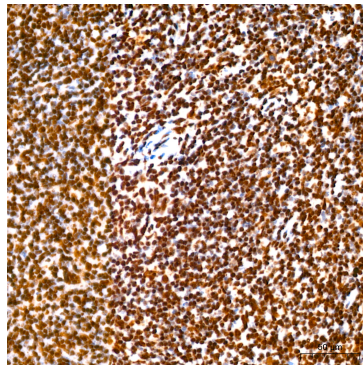
Immunohistochemistry analysis of paraffin-embedded Human spleen using KAP1/TRIM28 Rabbit mAb (A19568) at dilution of 1:200 (40x lens). High pressure antigen retrieval performed with 0.01M Citrate Bufferr (pH 6.0) prior to IHC staining.



Immunohistochemistry analysis of paraffin-embedded Mouse intestin using KAP1/TRIM28 Rabbit mAb (A19568) at dilution of 1:200 (40x lens). High pressure antigen retrieval performed with 0.01M Citrate Bufferr (pH 6.0) prior to IHC staining.



Immunohistochemistry analysis of paraffin-embedded Mouse kidney using KAP1/TRIM28 Rabbit mAb (A19568) at dilution of 1:200 (40x lens). High pressure antigen retrieval performed with 0.01M Citrate Bufferr (pH 6.0) prior to IHC staining.



Immunohistochemistry analysis of paraffin-embedded Mouse spleen using KAP1/TRIM28 Rabbit mAb (A19568) at dilution of 1:200 (40x lens). High pressure antigen retrieval performed with 0.01M Citrate Bufferr (pH 6.0) prior to IHC staining.