

YY1 Rabbit mAb

Catalog No.: A19569

Recombinant

4 Publications

Basic Information

Observed MW

60kDa

Calculated MW

45kDa

Category

Primary antibody

Applications

WB,IF/ICC,IP,ELISA,ChIP

Cross-Reactivity

Human, Mouse, Rat

CloneNo number

ARC0048

Background

YY1 is a ubiquitously distributed transcription factor belonging to the GLI-Kruppel class of zinc finger proteins. The protein is involved in repressing and activating a diverse number of promoters. YY1 may direct histone deacetylases and histone acetyltransferases to a promoter in order to activate or repress the promoter, thus implicating histone modification in the function of YY1.

Recommended Dilutions

WB 1:1000 - 1:6000

IF/ICC 1:50 - 1:400

IP 0.5µg-4µg antibody for
200µg-400µg extracts of
whole cells

ELISA Recommended starting
concentration is 1 µg/mL.
Please optimize the
concentration based on
your specific assay
requirements.

ChIP 5µg antibody for
10µg-15µg of Chromatin

Contact

☎ | 400-999-6126

✉ | cn.market@abclonal.com.cn

Immunogen Information

Gene ID

7528

Swiss Prot

P25490

Immunogen

A synthetic peptide corresponding to a sequence within amino acids 200-300 of human YY1 (P25490).

Synonyms

DELTA; NF-E1; UCRBP; GADEV5; INO80S; YIN-YANG-1; YY1

Product Information

Source

Rabbit

Isotype

IgG

Purification

Affinity purification

Storage

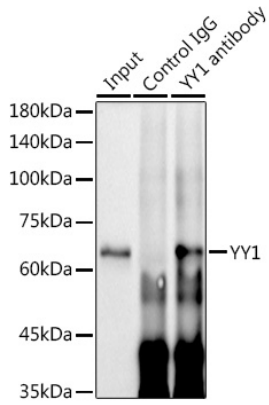
Store at -20°C. Avoid freeze / thaw cycles.

Buffer: PBS with 0.02% sodium azide,0.05% BSA,50% glycerol,pH7.3.

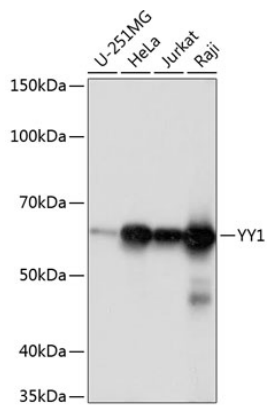


www.abclonal.com.cn

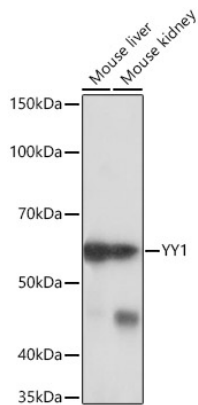
Validation Data



Immunoprecipitation analysis of 300 µg extracts of HeLa cells using 3 µg YY1 antibody (A19569). Western blot was performed from the immunoprecipitate using YY1 antibody (A19569) at a dilution of 1:2000.

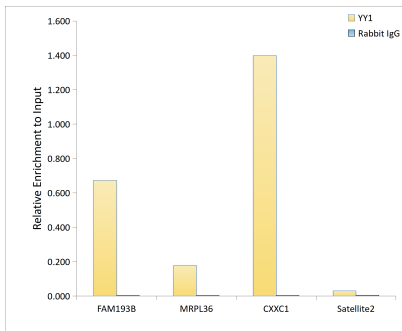


Western blot analysis of various lysates using YY1 Rabbit mAb (A19569) at 1:1000 dilution. Secondary antibody: HRP-conjugated Goat anti-Rabbit IgG (H+L) (AS014) at 1:10000 dilution. Lysates/proteins: 25µg per lane. Blocking buffer: 3% nonfat dry milk in TBST. Detection: ECL Basic Kit (RM00020). Exposure time: 1s.

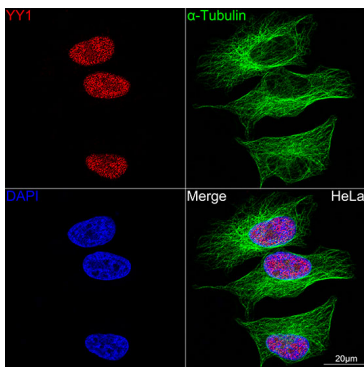


Western blot analysis of various lysates using YY1 Rabbit mAb (A19569) at 1:1000 dilution. Secondary antibody: HRP-conjugated Goat anti-Rabbit IgG (H+L) (AS014) at 1:10000 dilution. Lysates/proteins: 25µg per lane. Blocking buffer: 3% nonfat dry milk in TBST. Detection: ECL Basic Kit (RM00020). Exposure time: 10s.

Validation Data



Chromatin immunoprecipitation analysis of extracts of 293T cells, using YY1 antibody (A19569) and rabbit IgG. The amount of immunoprecipitated DNA was checked by quantitative PCR. Histogram was constructed by the ratios of the immunoprecipitated DNA to the input.



Confocal imaging of HeLa cells using YY1 Rabbit mAb (A19569, dilution 1:50) (Red). The cells were counterstained with α -Tubulin Mouse mAb (AC012, dilution 1:400) (Green). DAPI was used for nuclear staining (blue). Objective: 100x.