

RIPK1/RIP Rabbit mAb

Catalog No.: A19580

Recombinant

9 Publications

Basic Information

Observed MW

75kDa

Calculated MW

76kDa

Category

Primary antibody

Applications

WB,IP,ELISA

Cross-Reactivity

Human

CloneNo number

ARC0059

Background

This gene encodes a member of the receptor-interacting protein (RIP) family of serine/threonine protein kinases. The encoded protein plays a role in inflammation and cell death in response to tissue damage, pathogen recognition, and as part of developmental regulation. RIPK1/RIP3 kinase-mediated necrosis is referred to as necroptosis. Genetic disruption of this gene in mice results in death shortly after birth.

Recommended Dilutions

WB 1:1000 - 1:2000

IP 0.5µg-4µg antibody for
200µg-400µg extracts of
whole cells

ELISA Recommended starting
concentration is 1 µg/mL.
Please optimize the
concentration based on
your specific assay
requirements.

Contact

☎ | 400-999-6126

✉ | cn.market@abclonal.com.cn

🌐 | www.abclonal.com.cn

Immunogen Information

Gene ID

8737

Swiss Prot

Q13546

Immunogen

Recombinant fusion protein containing a sequence corresponding to amino acids 289-490 of human RIPK1/RIP (NP_003795.2).

Synonyms

RIP; RIP1; AIEFL; IMD57; RIP-1; RIPK1/RIP

Product Information

Source

Rabbit

Isotype

IgG

Purification

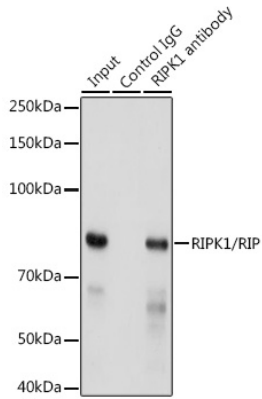
Affinity purification

Storage

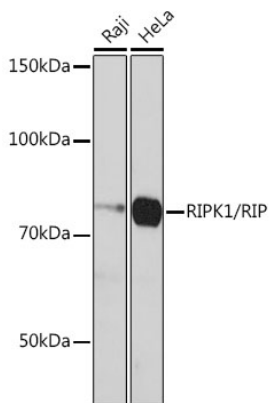
Store at -20°C. Avoid freeze / thaw cycles.

Buffer: PBS with 0.02% sodium azide,0.05% BSA,50% glycerol,pH7.3.

Validation Data



Immunoprecipitation of RIPK1/RIP from 300 µg extracts of HeLa cells was performed using 3 µg of RIPK1/RIP Rabbit mAb (A19580). Rabbit IgG isotype control (AC042) was used to precipitate the Control IgG sample. IP samples were eluted with 1X reducing Laemmli Buffer. The Input lane represents 10% of the total input. Western blot analysis of immunoprecipitates was conducted using RIPK1/RIP Rabbit mAb (A19580) at a dilution of 1:500.



Western blot analysis of various lysates using RIPK1/RIP Rabbit mAb (A19580) at 1:1000 dilution. Secondary antibody: HRP-conjugated Goat anti-Rabbit IgG (H+L) (AS014) at 1:10000 dilution. Lysates/proteins: 25µg per lane. Blocking buffer: 3% nonfat dry milk in TBST. Detection: ECL Basic Kit (RM00020). Exposure time: 3min.