

# SMC3 Rabbit mAb

Catalog No.: A19591 **Recombinant** **2 Publications**

## Basic Information

### Observed MW

142kDa

### Calculated MW

142kDa

### Category

Primary antibody

### Applications

WB,IF/ICC,IP,ELISA

### Cross-Reactivity

Human, Mouse, Rat

### CloneNo number

ARC2186

## Background

This gene belongs to the SMC3 subfamily of SMC proteins. The encoded protein occurs in certain cell types as either an intracellular, nuclear protein or a secreted protein. The nuclear form, known as structural maintenance of chromosomes 3, is a component of the multimeric cohesin complex that holds together sister chromatids during mitosis, enabling proper chromosome segregation. Post-translational modification of the encoded protein by the addition of chondroitin sulfate chains gives rise to the secreted proteoglycan bamacan, an abundant basement membrane protein.

## Recommended Dilutions

**WB** 1:1000 - 1:6000

**IF/ICC** 1:50 - 1:200

**IP** 0.5µg-4µg antibody for 200µg-400µg extracts of whole cells

**ELISA** Recommended starting concentration is 1 µg/mL. Please optimize the concentration based on your specific assay requirements.

## Immunogen Information

### Gene ID

9126

### Swiss Prot

Q9UQE7

### Immunogen

Synthetic peptide. This information is considered to be commercially sensitive.

### Synonyms

BAM; BMH; HCAP; CDLS3; CSPG6; SMC3L1; SMC3

## Contact

☎ | 400-999-6126

✉ | [cn.market@abclonal.com.cn](mailto:cn.market@abclonal.com.cn)

🌐 | [www.abclonal.com.cn](http://www.abclonal.com.cn)

## Product Information

### Source

Rabbit

### Isotype

IgG

### Purification

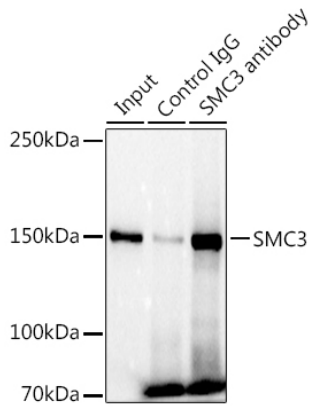
Affinity purification

### Storage

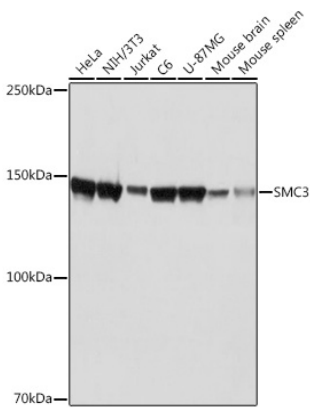
Store at -20°C. Avoid freeze / thaw cycles.

Buffer: PBS containing 50% glycerol and 0.05% BSA, preserved with proclin300 or sodium azide (as specified on the Certificate of Analysis), pH 7.3.

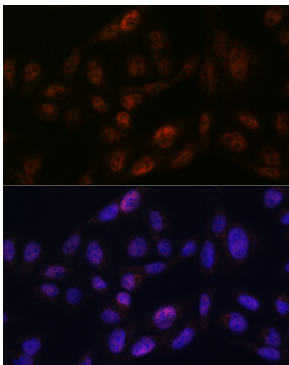
## Validation Data



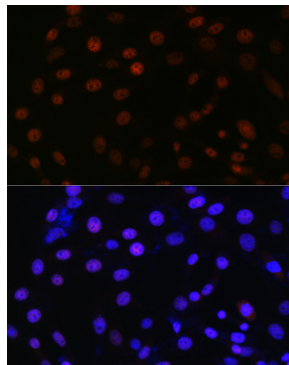
Immunoprecipitation analysis of 300  $\mu$ g extracts of U-87MG cells using 3  $\mu$ g SMC3 antibody (A19591). Western blot was performed from the immunoprecipitate using SMC3 antibody (A19591) at a dilution of 1:1000.



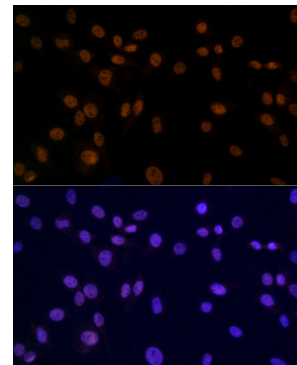
Western blot analysis of various lysates using SMC3 Rabbit mAb (A19591) at 1:1000 dilution. Secondary antibody: HRP-conjugated Goat anti-Rabbit IgG (H+L) (AS014) at 1:10000 dilution. Lysates/proteins: 25 $\mu$ g per lane. Blocking buffer: 3% nonfat dry milk in TBST. Detection: ECL Basic Kit (RM00020). Exposure time: 1s.



Immunofluorescence analysis of U2OS cells using SMC3 Rabbit mAb (A19591) at dilution of 1:100. Secondary antibody: Cy3-conjugated Goat anti-Rabbit IgG (H+L) (AS007) at 1:500 dilution. Blue: DAPI for nuclear staining.



Immunofluorescence analysis of NIH/3T3 cells using SMC3 Rabbit mAb (A19591) at dilution of 1:100. Secondary antibody: Cy3-conjugated Goat anti-Rabbit IgG (H+L) (AS007) at 1:500 dilution. Blue: DAPI for nuclear staining.



Immunofluorescence analysis of C6 cells using SMC3 Rabbit mAb (A19591) at dilution of 1:100. Secondary antibody: Cy3-conjugated Goat anti-Rabbit IgG (H+L) (AS007) at 1:500 dilution. Blue: DAPI for nuclear staining.