

# Y14/RBM8A Rabbit mAb

Catalog No.: A19599 **Recombinant**

## Basic Information

**Observed MW**

20kDa

**Calculated MW**

20kDa

**Category**

Primary antibody

**Applications**

ELISA, WB

**Cross-Reactivity**

Human, Mouse, Rat

**CloneNo number**

ARC2189

## Background

This gene encodes a protein with a conserved RNA-binding motif. The protein is found predominantly in the nucleus, although it is also present in the cytoplasm. It is preferentially associated with mRNAs produced by splicing, including both nuclear mRNAs and newly exported cytoplasmic mRNAs. It is thought that the protein remains associated with spliced mRNAs as a tag to indicate where introns had been present, thus coupling pre- and post-mRNA splicing events. Previously, it was thought that two genes encode this protein, RBM8A and RBM8B; it is now thought that the RBM8B locus is a pseudogene. There are two alternate translation start codons with this gene, which result in two forms of the protein. An allele mutation and a low-frequency noncoding single-nucleotide polymorphism (SNP) in this gene cause thrombocytopenia-absent radius (TAR) syndrome.

## Recommended Dilutions

WB 1:500 - 1:2000

## Immunogen Information

**Gene ID**

9939

**Swiss Prot**

Q9Y5S9

**Immunogen**

A synthetic peptide corresponding to a sequence within amino acids 1-100 of human Y14/RBM8A (Q9Y5S9).

**Synonyms**

TAR; Y14; RBM8; ZNRP; RBM8B; ZRNP1; BOV-1A; BOV-1B; BOV-1C; MDS014; DEL1q21.1; C1DELq21.1; Y14/RBM8A

## Contact

 | 400-999-6126 | [cn.market@abclonal.com.cn](mailto:cn.market@abclonal.com.cn) | [www.abclonal.com.cn](http://www.abclonal.com.cn)

## Product Information

**Source**

Rabbit

**Isotype**

IgG

**Purification**

Affinity purification

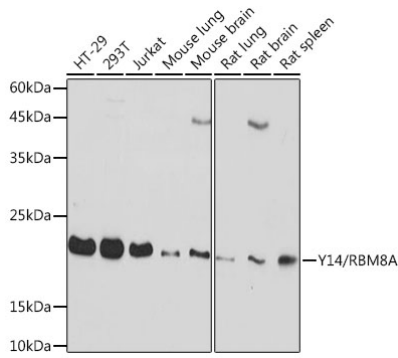
**Storage**

Store at -20°C. Avoid freeze / thaw cycles.

Buffer: PBS with 0.02% sodium azide, 0.05% BSA, 50% glycerol, pH7.3.

## Validation Data

---



Western blot analysis of extracts of various cell lines, using Y14/RBM8A Rabbit mAb (A19599) at 1:1000 dilution.

Secondary antibody: HRP Goat Anti-Rabbit IgG (H+L) (AS014) at 1:10000 dilution.

Lysates/proteins: 25µg per lane.

Blocking buffer: 3% nonfat dry milk in TBST.

Detection: ECL Basic Kit (RM00020).

Exposure time: 20s.