

MAD2L1BP Rabbit mAb

Catalog No.: A19600 **Recombinant**

Basic Information

Observed MW

37kDa

Calculated MW

31kDa

Category

Primary antibody

Applications

ELISA, WB, IHC-P

Cross-Reactivity

Human, Mouse, Rat

CloneNo number

ARC2187

Background

The protein encoded by this gene was identified as a binding protein of the MAD2 mitotic arrest deficient-like 1 (MAD2/MAD2L1). MAD2 is a key component of the spindle checkpoint that delays the onset of anaphase until all the kinetochores are attached to the spindle. This protein may interact with the spindle checkpoint and coordinate cell cycle events in late mitosis. Alternatively spliced transcript variants encoding distinct isoforms have been observed.

Recommended Dilutions

| | |
|--------------|----------------|
| WB | 1:500 - 1:2000 |
| IHC-P | 1:50 - 1:200 |

Immunogen Information

Gene ID

9587

Swiss Prot

Q15013

Immunogen

A synthetic peptide corresponding to a sequence within amino acids 175-274 of human MAD2L1BP (Q15013).

Synonyms

CMT2; MAD2L1BP

Contact

☎ | 400-999-6126

✉ | cn.market@abclonal.com.cn

🌐 | www.abclonal.com.cn

Product Information

Source

Rabbit

Isotype

IgG

Purification

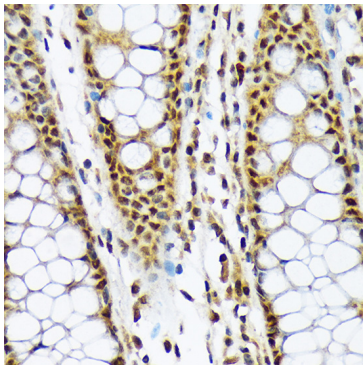
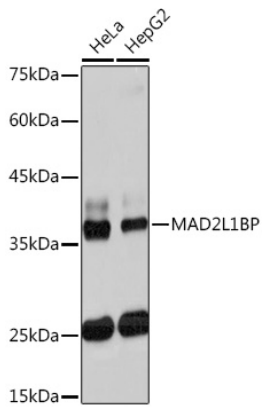
Affinity purification

Storage

Store at -20°C. Avoid freeze / thaw cycles.

Buffer: PBS with 0.02% sodium azide, 0.05% BSA, 50% glycerol, pH7.3.

Validation Data



Immunohistochemistry analysis of paraffin-embedded human colon using MAD2L1BP Rabbit mAb (A19600) at dilution of 1:100 (40x lens). Perform microwave antigen retrieval with 10 mM Tris/EDTA buffer pH 9.0 before commencing with IHC staining protocol.