

# [KD Validated] ATG7 Rabbit mAb

Catalog No.: A19604 **Recombinant** **7 Publications**

## Basic Information

### Observed MW

77kDa

### Calculated MW

78kDa

### Category

Primary antibody

### Applications

ELISA, WB, IHC-P, IP

### Cross-Reactivity

Human, Mouse, Rat

### CloneNo number

ARC0083

## Background

This gene encodes an E1-like activating enzyme that is essential for autophagy and cytoplasmic to vacuole transport. The encoded protein is also thought to modulate p53-dependent cell cycle pathways during prolonged metabolic stress. It has been associated with multiple functions, including axon membrane trafficking, axonal homeostasis, mitophagy, adipose differentiation, and hematopoietic stem cell maintenance. Alternative splicing results in multiple transcript variants.

## Recommended Dilutions

**WB** 1:500 - 1:2000**IHC-P** 1:50 - 1:200**IP** 0.5µg-4µg antibody for  
200µg-400µg extracts of  
whole cells

## Immunogen Information

### Gene ID

10533

### Swiss Prot

O95352

### Immunogen

A synthetic peptide corresponding to a sequence within amino acids 1-100 of human Atg7(Apg7) (O95352).

### Synonyms

GSA7; [KD Validated] ATG7

## Contact

 | 400-999-6126 | [cn.market@abclonal.com.cn](mailto:cn.market@abclonal.com.cn) | [www.abclonal.com.cn](http://www.abclonal.com.cn)

## Product Information

### Source

Rabbit

### Isotype

IgG

### Purification

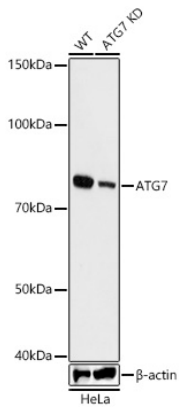
Affinity purification

### Storage

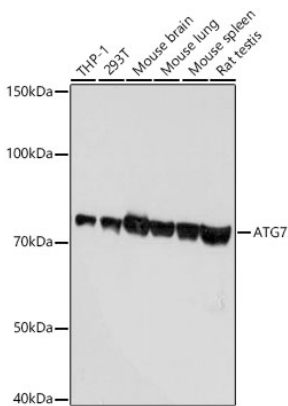
Store at -20°C. Avoid freeze / thaw cycles.

Buffer: PBS with 0.02% sodium azide, 0.05% BSA, 50% glycerol, pH7.3.

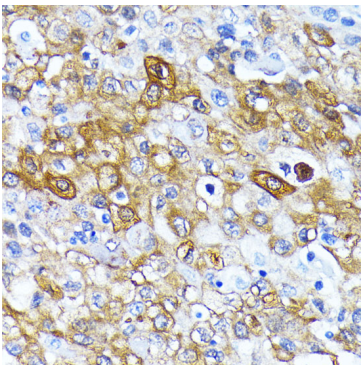
## Validation Data



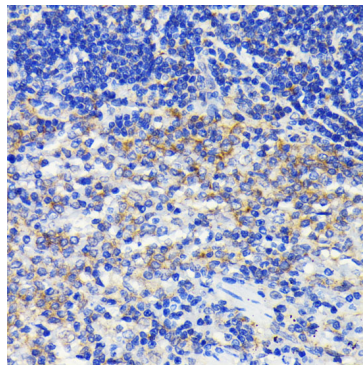
Western blot analysis of lysates from wild type (WT) and ATG7 knockdown (KD) HeLa cells, using [KD Validated] ATG7 Rabbit mAb (A19604) at 1:1000 dilution.  
Secondary antibody: HRP Goat Anti-Rabbit IgG (H+L) (AS014) at 1:10000 dilution.  
Lysates/proteins: 25µg per lane.  
Blocking buffer: 3% nonfat dry milk in TBST.  
Detection: ECL Basic Kit (RM00020).  
Exposure time: ARC0083.



Western blot analysis of various lysates using [KD Validated] ATG7 Rabbit mAb (A19604) at 1:1000 dilution.  
Secondary antibody: HRP Goat Anti-Rabbit IgG (H+L) (AS014) at 1:10000 dilution.  
Lysates/proteins: 25µg per lane.  
Blocking buffer: 3% nonfat dry milk in TBST.  
Detection: ECL Basic Kit (RM00020).  
Exposure time: 10s.



Immunohistochemistry analysis of paraffin-embedded human esophageal cancer using [KD Validated] ATG7 Rabbit mAb (A19604) at dilution of 1:100 (40x lens). Perform microwave antigen retrieval with 10 mM PBS buffer pH 7.2 before commencing with IHC staining protocol.



Immunohistochemistry analysis of paraffin-embedded rat spleen using [KD Validated] ATG7 Rabbit mAb (A19604) at dilution of 1:100 (40x lens). Perform microwave antigen retrieval with 10 mM PBS buffer pH 7.2 before commencing with IHC staining protocol.