

# TACC3 Rabbit mAb

Catalog No.: A19617 **Recombinant**

## Basic Information

**Observed MW**

140 kDa

**Calculated MW**

90 kDa

**Category**

Primary antibody

**Applications**

WB,Auto WB,IHC-P,IF/ICC,ELISA

**Cross-Reactivity**

Human, Mouse, Rat

**CloneNo number**

ARC2195

## Background

TACC3, also known as ERIC 1, belongs to the TACC family. TACC family members TACC1, TACC2, and TACC3 map very closely to the corresponding FGFR1, FGFR2, FGFR3 genes on chromosomes 8, 10, and 4. Subsequently, since they are phylogenetically related, it is proposed that TACC and FGFR have similar roles in cell growth and differentiation. It plays a role in the microtubule-dependent coupling of the nucleus and the centrosome and involved in the processes that regulate centrosome-mediated interkinetic nuclear migration (INM) of neural progenitors.

## Recommended Dilutions

**WB** 1:500 - 1:1000**Auto WB** 1:100 - 1:500**IHC-P** 1:50 - 1:200**IF/ICC** 1:50 - 1:200**ELISA** Recommended starting concentration is 1 µg/mL. Please optimize the concentration based on your specific assay requirements.

## Immunogen Information

**Gene ID**

10460

**Swiss Prot**

Q9Y6A5


**Immunogen**

Synthetic peptide. This information is considered to be commercially sensitive.

**Synonyms**

ERIC1; Tacc4; ERIC-1; maskin; TACC3

## Contact

 | 400-999-6126 | [cn.market@abclonal.com.cn](mailto:cn.market@abclonal.com.cn) | [www.abclonal.com.cn](http://www.abclonal.com.cn)

## Product Information

**Source**

Rabbit

**Isotype**

IgG

**Purification**

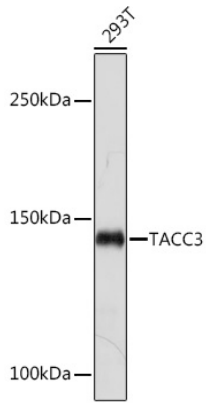
Affinity purification

**Storage**

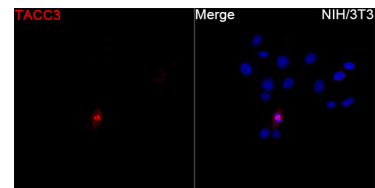
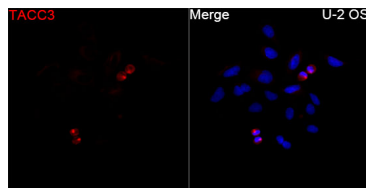
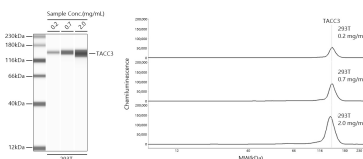
Store at -20°C. Avoid freeze / thaw cycles.

Buffer: PBS containing 50% glycerol and 0.05% BSA, preserved with proclin300 or sodium azide (as specified on the Certificate of Analysis), pH 7.3.

## Validation Data



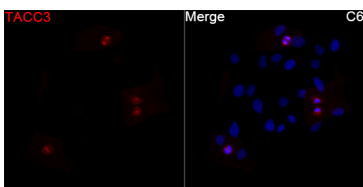
Western blot analysis of lysates from 293T cells, using TACC3 Rabbit mAb (A19617) at 1:1000 dilution. Secondary antibody: HRP-conjugated Goat anti-Rabbit IgG (H+L) (AS014) at 1:10000 dilution. Lysates/proteins: 25µg per lane. Blocking buffer: 3% nonfat dry milk in TBST. Detection: ECL Basic Kit (RM00020). Exposure time: 30s.



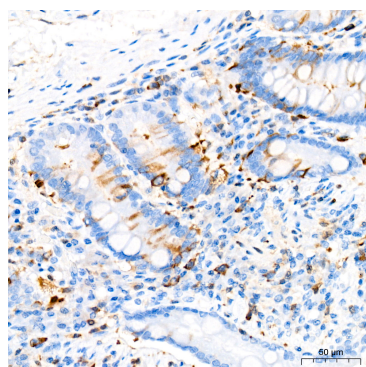
Simple Western™ analysis of lysates from 293T cells using TACC3 Rabbit mAb (A19617) at 1:100 dilution. The virtual lane view (left) shows the target band (as indicated) with samples in concentrations of 0.2 mg/mL, 0.7 mg/mL and 2.0 mg/mL. The corresponding electropherogram view (right) plots chemiluminescence intensity against molecular weight along the capillary for sample concentrations of 0.2 mg/mL, 0.7 mg/mL and 2.0 mg/mL. This experiment was performed under reducing conditions on the Jess™ Simple Western instrument from ProteinSimple, a BioTechne brand, using the 12-230 kDa separation module.

Immunofluorescence analysis of U-2 OS cells using TACC3 Rabbit mAb (A19617) at a dilution of 1:100 (40x lens). Secondary antibody: Cy3-conjugated Goat anti-Rabbit IgG (H+L)(AS007) at 1:500 dilution. Blue: DAPI for nuclear staining.

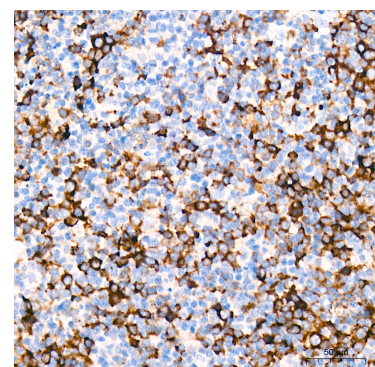
Immunofluorescence analysis of NIH/3T3 cells using TACC3 Rabbit mAb (A19617) at a dilution of 1:100 (40x lens). Secondary antibody: Cy3-conjugated Goat anti-Rabbit IgG (H+L)(AS007) at 1:500 dilution. Blue: DAPI for nuclear staining.



Immunofluorescence analysis of C6 cells using TACC3 Rabbit mAb (A19617) at a dilution of 1:100 (40x lens). Secondary antibody: Cy3-conjugated Goat anti-Rabbit IgG (H+L)(AS007) at 1:500 dilution. Blue:



Immunohistochemistry analysis of paraffin-embedded Human colon tissue using TACC3 Rabbit mAb (A19617) at a dilution of 1:200 (40x lens). High pressure antigen retrieval was performed with 0.01 M citrate buffer (pH



Immunohistochemistry analysis of paraffin-embedded Human tonsil tissue using TACC3 Rabbit mAb (A19617) at a dilution of 1:200 (40x lens). High pressure antigen retrieval was performed with 0.01 M citrate buffer (pH

## Validation Data

---

DAPI for nuclear staining.

6.0) prior to IHC staining.

6.0) prior to IHC staining.