

Cytochrome P450 4A (CYP4A11) Rabbit mAb

Catalog No.: A19662 **Recombinant** **2 Publications**

Basic Information

Observed MW

Calculated MW

59kDa

Category

Primary antibody

Applications

ELISA, WB, IHC-P

Cross-Reactivity

Human, Mouse, Rat

CloneNo number

ARC2219

Background

This gene encodes a member of the cytochrome P450 superfamily of enzymes. The cytochrome P450 proteins are monooxygenases which catalyze many reactions involved in drug metabolism and synthesis of cholesterol, steroids and other lipids. This protein localizes to the endoplasmic reticulum and hydroxylates medium-chain fatty acids such as laurate and myristate. Multiple transcript variants have been found for this gene.

Recommended Dilutions

WB 1:500 - 1:2000

IHC-P 1:50 - 1:200

Immunogen Information

Gene ID

1579

Swiss Prot

Q02928

Immunogen

A synthetic peptide corresponding to a sequence within amino acids 50-150 of human Cytochrome P450 4A (CYP4A11) (CYP4A11) (Q02928).

Synonyms

CP4Y; CYP4A2; CYP4AII; CYP4A11; Cytochrome P450 4A (CYP4A11)

Contact

☎ | 400-999-6126

✉ | cn.market@abclonal.com.cn

🌐 | www.abclonal.com.cn

Product Information

Source

Rabbit

Isotype

IgG

Purification

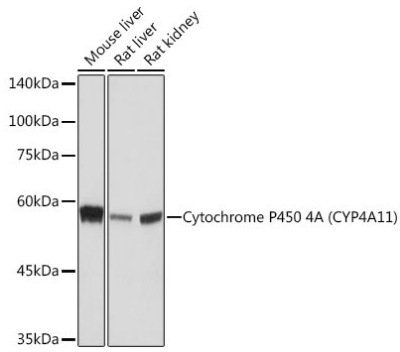
Affinity purification

Storage

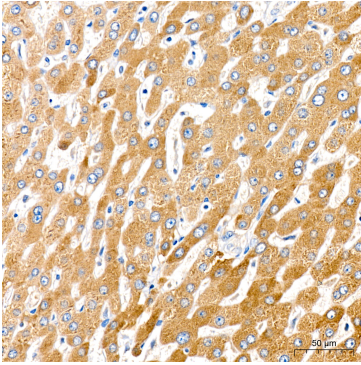
Store at -20°C. Avoid freeze / thaw cycles.

Buffer: PBS with 0.02% sodium azide, 0.05% BSA, 50% glycerol, pH7.3.

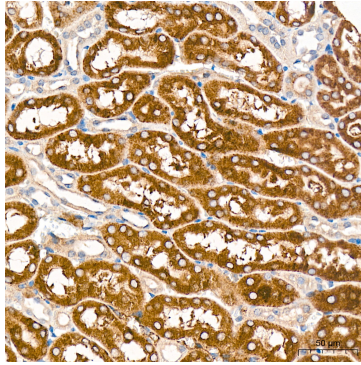
Validation Data



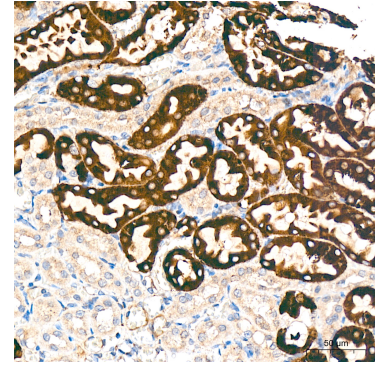
Western blot analysis of various lysates using Cytochrome P450 4A (CYP4A11) Rabbit mAb (A19662) at 1:1000 dilution.
Secondary antibody: HRP Goat Anti-Rabbit IgG (H+L) (AS014) at 1:10000 dilution.
Lysates/proteins: 25µg per lane.
Blocking buffer: 3% nonfat dry milk in TBST.
Detection: ECL Basic Kit (RM00020).
Exposure time: 10s.



Immunohistochemistry analysis of Cytochrome P450 4A (CYP4A11) in paraffin-embedded human liver tissue using Cytochrome P450 4A (CYP4A11) Rabbit mAb (A19662) at a dilution of 1:200 (40x lens). High pressure antigen retrieval was performed with 0.01 M citrate buffer (pH 6.0) prior to IHC staining.



Immunohistochemistry analysis of Cytochrome P450 4A (CYP4A11) in paraffin-embedded mouse kidney tissue using Cytochrome P450 4A (CYP4A11) Rabbit mAb (A19662) at a dilution of 1:200 (40x lens). High pressure antigen retrieval was performed with 0.01 M citrate buffer (pH 6.0) prior to IHC staining.



Immunohistochemistry analysis of Cytochrome P450 4A (CYP4A11) in paraffin-embedded rat kidney tissue using Cytochrome P450 4A (CYP4A11) Rabbit mAb (A19662) at a dilution of 1:200 (40x lens). High pressure antigen retrieval was performed with 0.01 M citrate buffer (pH 6.0) prior to IHC staining.