

[KD Validated] LC3B Rabbit mAb

Catalog No.: A19665 **Recombinant** **192 Publications**

Basic Information

Observed MW

14kDa/16kDa

Calculated MW

15kDa

Category

Primary antibody

Applications

WB, IHC-P, IF/ICC, IP, ELISA

Cross-Reactivity

Human, Mouse, Rat

CloneNo number

ARC0144

Background

The product of this gene is a subunit of neuronal microtubule-associated MAP1A and MAP1B proteins, which are involved in microtubule assembly and important for neurogenesis. Studies on the rat homolog implicate a role for this gene in autophagy, a process that involves the bulk degradation of cytoplasmic component.

Recommended Dilutions

WB 1:1000 - 1:4000

IHC-P 1:100 - 1:500

IF/ICC 1:200 - 1:800

IP 0.5µg-4µg antibody for
200µg-400µg extracts of
whole cells

ELISA Recommended starting
concentration is 1 µg/mL.
Please optimize the
concentration based on
your specific assay
requirements.

Immunogen Information

Gene ID

81631

Swiss Prot

Q9GZQ8

Immunogen

Recombinant protein (or fragment). This information is considered to be commercially sensitive.

Synonyms

LC3B; ATG8F; MAP1LC3B-a; MAP1A/1BLC3; 3B

Product Information

Source

Rabbit

Isotype

IgG

Purification

Affinity purification

Storage

Store at -20°C. Avoid freeze / thaw cycles.

Buffer: PBS containing 50% glycerol and 0.05% BSA, preserved with proclin300 or sodium azide (as specified on the Certificate of Analysis), pH 7.3.

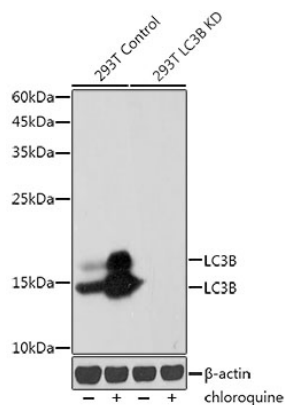
Contact

☎ | 400-999-6126

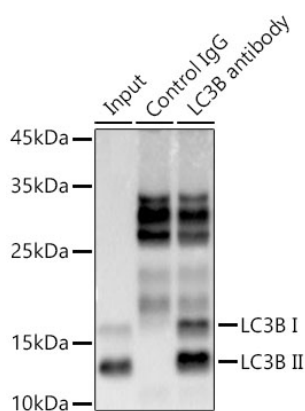
✉ | cn.market@abclonal.com.cn

🌐 | www.abclonal.com.cn

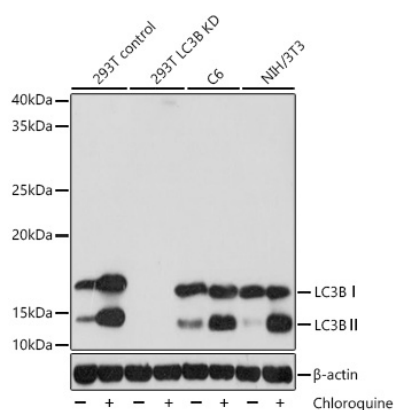
Validation Data



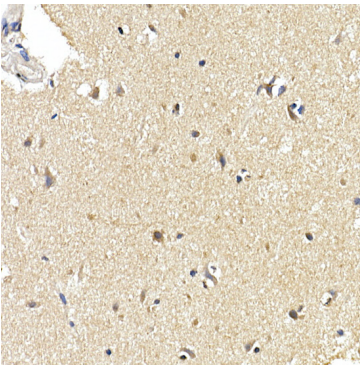
Western blot analysis of lysates from wild type (WT) and LC3B knockdown (KD) 293T cells, using [KD Validated] LC3B Rabbit mAb (A19665) at 1:1000 dilution. wild type (WT) and LC3B knockdown (KD) 293T cells were treated with Chloroquine (50 μ M) at 37°C for 20 hours. Secondary antibody: HRP-conjugated Goat anti-Rabbit IgG (H+L) (AS014) at 1:10000 dilution. Lysates/proteins: 25 μ g per lane. Blocking buffer: 3% nonfat dry milk in TBST. Detection: ECL Basic Kit (RM00020). Exposure time: 30s.



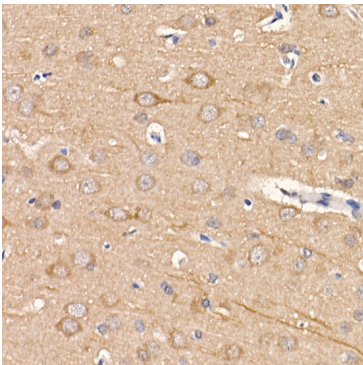
Immunoprecipitation analysis of 300 μ g extracts from 293T cells using 3 μ g [KD Validated] LC3B Rabbit mAb (A19665). Western blot was performed from the immunoprecipitate using LC3B antibody (A19665) at a dilution of 1:1000.



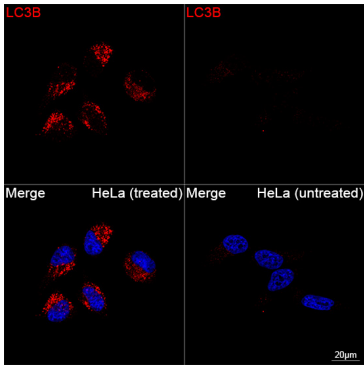
Western blot analysis of various lysates, using [KD Validated] LC3B Rabbit mAb (A19665) at 1:1000 dilution. 293T, C6 and NIH/3T3 cells were treated with Chloroquine (50 μ M) at 37°C for 20 hours. Secondary antibody: HRP-conjugated Goat anti-Rabbit IgG (H+L) (AS014) at 1:10000 dilution. Lysates/proteins: 25 μ g per lane. Blocking buffer: 3% nonfat dry milk in TBST. Detection: ECL Basic Kit (RM00020). Exposure time: 5s.



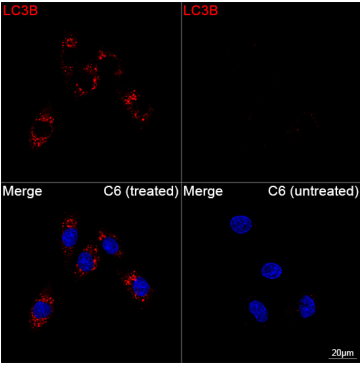
Immunohistochemistry analysis of paraffin-embedded Human brain using [KD Validated] LC3B Rabbit mAb (A19665) at dilution of 1:100 (40x lens). High pressure antigen retrieval performed with 0.01M Citrate buffer (pH 6.0) prior to IHC staining.



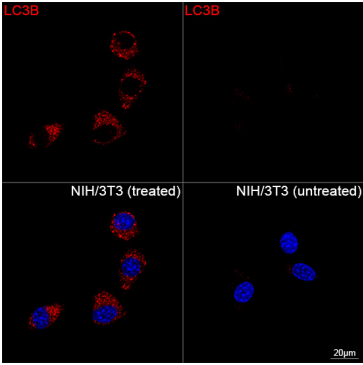
Immunohistochemistry analysis of paraffin-embedded Rat brain using [KD Validated] LC3B Rabbit mAb (A19665) at dilution of 1:100 (40x lens). High pressure antigen retrieval performed with 0.01M Citrate buffer (pH 6.0) prior to IHC staining.



Confocal imaging of HeLa cells (treated with Chloroquine) and HeLa cells (untreated) using [KD Validated] LC3B Rabbit mAb (A19665, dilution 1:200) followed by a further incubation with Cy3 Goat Anti-Rabbit IgG (H+L) (AS007, dilution 1:500) (Red). DAPI was used for nuclear staining (Blue). Objective: 100x.



Confocal imaging of C6 cells (treated with Chloroquine) and C6 cells (untreated) using [KD Validated] LC3B Rabbit mAb (A19665, dilution 1:200) followed by a further incubation with Cy3 Goat Anti-Rabbit IgG (H+L) (AS007, dilution 1:500) (Red). DAPI was used for nuclear staining (Blue). Objective: 100x.



Confocal imaging of NIH/3T3 cells (treated with Chloroquine) and NIH/3T3 cells (untreated) using [KD Validated] LC3B Rabbit mAb (A19665, dilution 1:200) followed by a further incubation with Cy3 Goat Anti-Rabbit IgG (H+L) (AS007, dilution 1:500) (Red). DAPI was used for nuclear staining (Blue). Objective: 100x.