

PSD93/chapsyn-110/DLG2 Rabbit mAb

Catalog No.: A19669 **Recombinant** **1 Publications**

Basic Information

Observed MW

110kDa

Calculated MW

98kDa

Category

Primary antibody

Applications

ELISA,WB,IF/ICC

Cross-Reactivity

Human, Mouse, Rat

CloneNo number

ARC2222

Background

This gene encodes a member of the membrane-associated guanylate kinase (MAGUK) family. The encoded protein forms a heterodimer with a related family member that may interact at postsynaptic sites to form a multimeric scaffold for the clustering of receptors, ion channels, and associated signaling proteins. Multiple transcript variants encoding different isoforms have been found for this gene. Additional transcript variants have been described, but their full-length nature is not known.

Recommended Dilutions

WB 1:500 - 1:2000

IF/ICC 1:50 - 1:200

Immunogen Information

Gene ID

1740

Swiss Prot

Q15700

Immunogen

A synthetic peptide corresponding to a sequence within amino acids 600-700 of human PSD93/chapsyn-110/DLG2 (Q15700).

Synonyms

PSD93; PSD-93; PPP1R58; chapsyn-110; PSD93/chapsyn-110/DLG2

Contact

 | 400-999-6126 | cn.market@abclonal.com.cn | www.abclonal.com.cn

Product Information

Source

Rabbit

Isotype

IgG

Purification

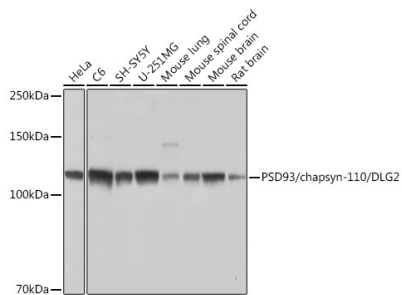
Affinity purification

Storage

Store at -20°C. Avoid freeze / thaw cycles.

Buffer: PBS with 0.02% sodium azide,0.05% BSA,50% glycerol,pH7.3.

Validation Data



Western blot analysis of extracts of various cell lines, using PSD93/chapsyn-110/DLG2 Rabbit mAb (A19669) at 1:1000 dilution.

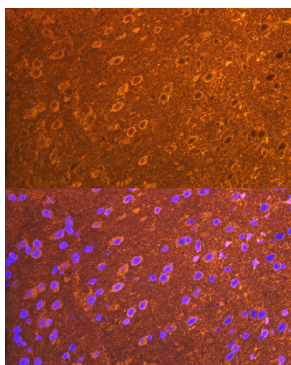
Secondary antibody: HRP Goat Anti-Rabbit IgG (H+L) (AS014) at 1:10000 dilution.

Lysates/proteins: 25µg per lane.

Blocking buffer: 3% nonfat dry milk in TBST.

Detection: ECL Basic Kit (RM00020).

Exposure time: 1s.



Immunofluorescence analysis of mouse brain cells using PSD93/chapsyn-110/DLG2 Rabbit mAb (A19669) at dilution of 1:100 (40x lens). Blue: DAPI for nuclear staining.