

# E2F4 Rabbit mAb

Catalog No.: A19670 **Recombinant**

## Basic Information

**Observed MW**

62kDa

**Calculated MW**

44kDa

**Category**

Primary antibody

**Applications**

ELISA,WB

**Cross-Reactivity**

Human, Mouse

**CloneNo number**

ARC2223

## Background

The protein encoded by this gene is a member of the E2F family of transcription factors. The E2F family plays a crucial role in the control of cell cycle and action of tumor suppressor proteins and is also a target of the transforming proteins of small DNA tumor viruses. The E2F proteins contain several evolutionally conserved domains found in most members of the family. These domains include a DNA binding domain, a dimerization domain which determines interaction with the differentiation regulated transcription factor proteins (DP), a transactivation domain enriched in acidic amino acids, and a tumor suppressor protein association domain which is embedded within the transactivation domain. This protein binds to all three of the tumor suppressor proteins pRB, p107 and p130, but with higher affinity to the last two. It plays an important role in the suppression of proliferation-associated genes, and its gene mutation and increased expression may be associated with human cancer.

## Recommended Dilutions

WB 1:500 - 1:1000

## Immunogen Information

**Gene ID**

1874

**Swiss Prot**

Q16254

**Immunogen**

A synthetic peptide corresponding to a sequence within amino acids 250-350 of human E2F4 (Q16254).

**Synonyms**

E2F-4; E2F4

## Contact

 | 400-999-6126 | [cn.market@abclonal.com.cn](mailto:cn.market@abclonal.com.cn) | [www.abclonal.com.cn](http://www.abclonal.com.cn)

## Product Information

**Source**

Rabbit

**Isotype**

IgG

**Purification**

Affinity purification

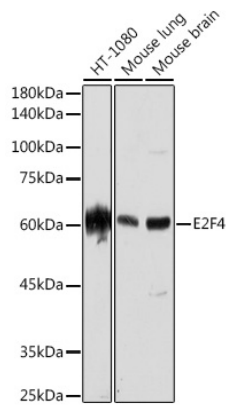
**Storage**

Store at -20°C. Avoid freeze / thaw cycles.

Buffer: PBS with 0.02% sodium azide,0.05% BSA,50% glycerol,pH7.3.

## Validation Data

---



Western blot analysis of extracts of various cell lines, using E2F4 antibody (A19670) at 1:1000 dilution.  
Secondary antibody: HRP Goat Anti-Rabbit IgG (H+L) (AS014) at 1:10000 dilution.  
Lysates/proteins: 25µg per lane.  
Blocking buffer: 3% nonfat dry milk in TBST.  
Detection: ECL Enhanced Kit (RM00021).  
Exposure time: 180s.