

# [KD Validated] Casein Kinase 2 alpha (CSNK2A1) Rabbit mAb

Catalog No.: A19683 **Recombinant** **1 Publications**

## Basic Information

### Observed MW

45 kDa

### Calculated MW

45 kDa

### Category

Primary antibody

### Applications

WB, ELISA

### Cross-Reactivity

Human

### CloneNo number

ARC0163

## Background

Casein kinase II is a serine/threonine protein kinase that phosphorylates acidic proteins such as casein. It is involved in various cellular processes, including cell cycle control, apoptosis, and circadian rhythm. The kinase exists as a tetramer and is composed of an alpha, an alpha-prime, and two beta subunits. The alpha subunits contain the catalytic activity while the beta subunits undergo autophosphorylation. The protein encoded by this gene represents the alpha subunit. Multiple transcript variants encoding different protein isoforms have been found for this gene.

## Recommended Dilutions

**WB** 1:1000 - 1:3000

**ELISA** Recommended starting concentration is 1 µg/mL. Please optimize the concentration based on your specific assay requirements.

## Immunogen Information

### Gene ID

1457

### Swiss Prot

P68400

### Immunogen

Synthetic peptide. This information is considered to be commercially sensitive.

### Synonyms

CKII; Cka1; Cka2; CK2A1; OCNDS; [KD Validated] Casein Kinase 2 alpha (CSNK2A1)

## Contact

☎ | 400-999-6126

✉ | [cn.market@abclonal.com.cn](mailto:cn.market@abclonal.com.cn)

🌐 | [www.abclonal.com.cn](http://www.abclonal.com.cn)

## Product Information

### Source

Rabbit

### Isotype

IgG

### Purification

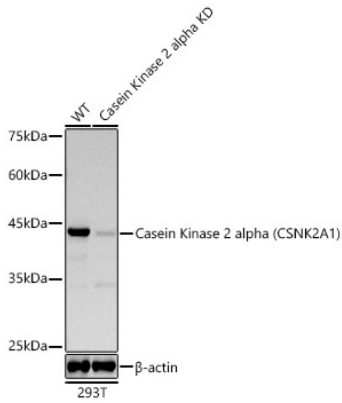
Affinity purification

### Storage

Store at -20°C. Avoid freeze / thaw cycles.

Buffer: PBS containing 50% glycerol and 0.05% BSA, preserved with proclin300 or sodium azide (as specified on the Certificate of Analysis), pH 7.3.

## Validation Data



Western blot analysis of lysates from wild type(WT) and Casein Kinase 2 alpha (CSNK2A1) knockdown (KD) 293T cells, using [KD Validated] Casein Kinase 2 alpha (CSNK2A1) Rabbit mAb (A19683) at 1:1000 dilution.

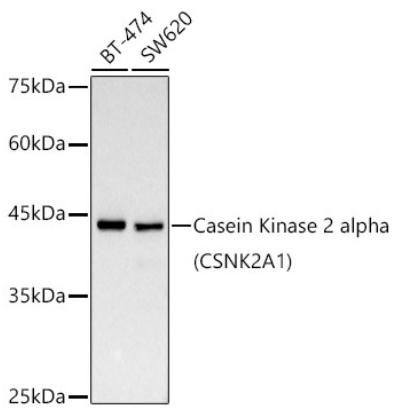
Secondary antibody: HRP-conjugated Goat anti-Rabbit IgG (H+L) (AS014) at 1:10000 dilution.

Lysates/proteins: 25µg per lane.

Blocking buffer: 3% nonfat dry milk in TBST.

Detection: ECL Basic Kit (RM00020).

Exposure time: 30s.



Western blot analysis of various lysates, using [KD Validated] Casein Kinase 2 alpha (CSNK2A1) Rabbit mAb (A19683) at 1:1000 dilution.

Secondary antibody: HRP-conjugated Goat anti-Rabbit IgG (H+L) (AS014) at 1:10000 dilution.

Lysates/proteins: 25µg per lane.

Blocking buffer: 3% nonfat dry milk in TBST.

Detection: ECL Basic Kit (RM00020).

Exposure time: 30s.