

# [KO Validated] Bax Rabbit mAb

Catalog No.: A19684

KO Validated
Recombinant
121 Publications

## Basic Information

### Observed MW

21kDa/

### Calculated MW

21kDa

### Category

Primary antibody

### Applications

WB,IHC-P,ELISA

### Cross-Reactivity

Human, Mouse, Rat

### CloneNo number

ARC0164

## Background

The protein encoded by this gene belongs to the BCL2 protein family. BCL2 family members form hetero- or homodimers and act as anti- or pro-apoptotic regulators that are involved in a wide variety of cellular activities. This protein forms a heterodimer with BCL2, and functions as an apoptotic activator. The association and the ratio of BAX to BCL2 also determines survival or death of a cell following an apoptotic stimulus. This protein is reported to interact with, and increase the opening of, the mitochondrial voltage-dependent anion channel (VDAC), which leads to the loss in membrane potential and the release of cytochrome c. The expression of this gene is regulated by the tumor suppressor P53 and has been shown to be involved in P53-mediated apoptosis. Multiple alternatively spliced transcript variants, which encode different isoforms, have been reported for this gene.

## Recommended Dilutions

**WB** 1:1000 - 1:4000

**IHC-P** 1:1000 - 1:4000

**ELISA** Recommended starting concentration is 1 µg/mL. Please optimize the concentration based on your specific assay requirements.

## Immunogen Information

### Gene ID

581

### Swiss Prot

Q07812

### Immunogen

A synthetic peptide corresponding to a sequence within amino acids 1-100 of human Bax (Q07812).

### Synonyms

BCL2L4; Bax

## Contact

 | 400-999-6126

 | [cn.market@abclonal.com.cn](mailto:cn.market@abclonal.com.cn)
 | [www.abclonal.com.cn](http://www.abclonal.com.cn)

## Product Information

### Source

Rabbit

### Isotype

IgG

### Purification

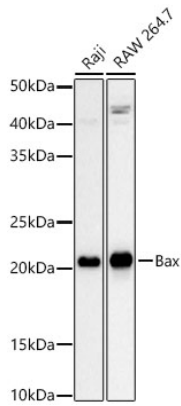
Affinity purification

### Storage

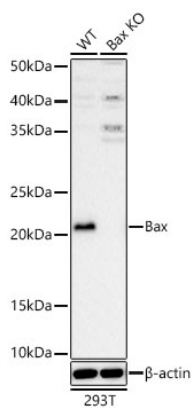
Store at -20°C. Avoid freeze / thaw cycles.

Buffer: PBS with 0.05% proclin300,0.05% BSA,50% glycerol,pH7.3.

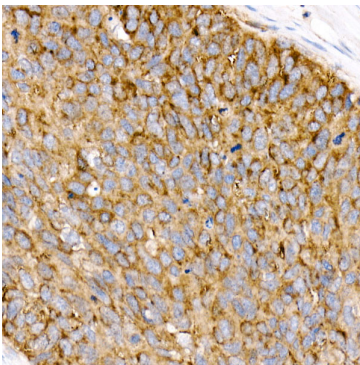
## Validation Data



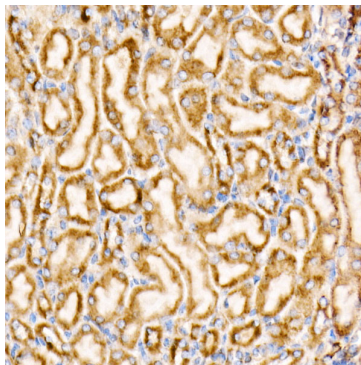
Western blot analysis of various lysates using Bax Rabbit mAb (A19684) at 1:1000 dilution. Secondary antibody: HRP-conjugated Goat anti-Rabbit IgG (H+L) (AS014) at 1:10000 dilution. Lysates / proteins: 25 µg per lane. Blocking buffer: 3 % nonfat dry milk in TBST. Detection: ECL Basic Kit (RM00020). Exposure time: 30s.



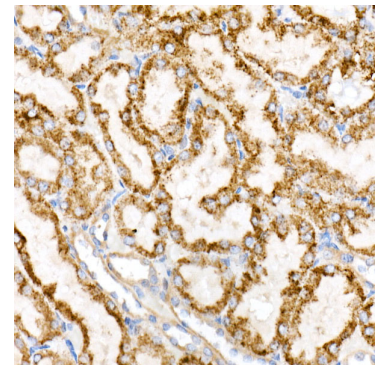
Western blot analysis of lysates from wild type (WT) and Bax knockout (KO) 293T cells using Bax Rabbit mAb (A19684) at 1:1000 dilution. Secondary antibody: HRP-conjugated Goat anti-Rabbit IgG (H+L) (AS014) at 1:10000 dilution. Lysates/proteins: 25 µg per lane. Blocking buffer: 3% nonfat dry milk in TBST. Detection: ECL Basic Kit (RM00020). Exposure time: 30s.



Immunohistochemistry analysis of paraffin-embedded Human esophageal cancer tissue using Bax Rabbit mAb (A19684) at a dilution of 1:1600 (40x lens). High pressure antigen retrieval performed with 0.01M Tris-EDTA Buffer (pH 9.0) prior to IHC staining.



Immunohistochemistry analysis of paraffin-embedded Mouse kidney tissue using Bax Rabbit mAb (A19684) at a dilution of 1:1600 (40x lens). High pressure antigen retrieval performed with 0.01M Tris-EDTA Buffer (pH 9.0) prior to IHC staining.



Immunohistochemistry analysis of paraffin-embedded Rat kidney tissue using Bax Rabbit mAb (A19684) at a dilution of 1:1600 (40x lens). High pressure antigen retrieval performed with 0.01M Tris-EDTA Buffer (pH 9.0) prior to IHC staining.