

# [KO Validated] cIAP1 Rabbit mAb

Catalog No.: A19688

**KO** Validated

Recombinant

1 Publications

## Basic Information

### Observed MW

68kDa

### Calculated MW

70kDa

### Category

Primary antibody

### Applications

ELISA, WB, IHC-P

### Cross-Reactivity

Human, Rat

### CloneNo number

ARC0168

## Background

The protein encoded by this gene is a member of a family of proteins that inhibits apoptosis by binding to tumor necrosis factor receptor-associated factors TRAF1 and TRAF2, probably by interfering with activation of ICE-like proteases. This encoded protein inhibits apoptosis induced by serum deprivation and menadione, a potent inducer of free radicals. Alternatively spliced transcript variants encoding different isoforms have been found for this gene.

## Recommended Dilutions

WB 1:500 - 1:1000

IHC-P 1:50 - 1:200

## Immunogen Information

### Gene ID

329

### Swiss Prot

Q13490

### Immunogen

A synthetic peptide corresponding to a sequence within amino acids 1-100 of human cIAP1 (Q13490).

### Synonyms

API1; MIHB; HIAP2; RNF48; cIAP1; Hiap-2; c-IAP1; P1

## Contact

☎ | 400-999-6126

✉ | [cn.market@abclonal.com.cn](mailto:cn.market@abclonal.com.cn)

🌐 | [www.abclonal.com.cn](http://www.abclonal.com.cn)

## Product Information

### Source

Rabbit

### Isotype

IgG

### Purification

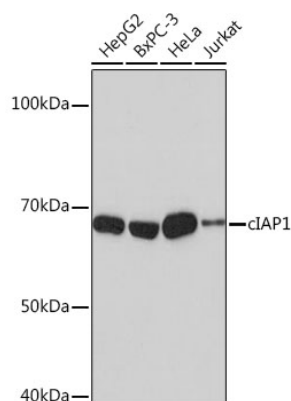
Affinity purification

### Storage

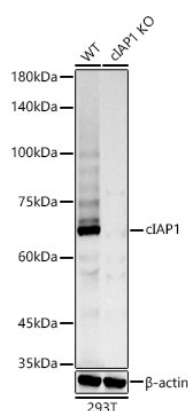
Store at -20°C. Avoid freeze / thaw cycles.

Buffer: PBS with 0.02% sodium azide, 0.05% BSA, 50% glycerol, pH7.3.

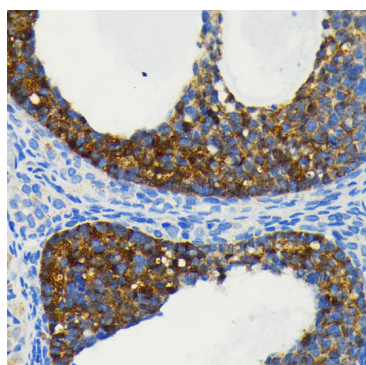
## Validation Data



Western blot analysis of extracts of various cell lines, using cIAP1 antibody (A19688) at 1:1000 dilution.  
 Secondary antibody: HRP Goat Anti-Rabbit IgG (H+L) (AS014) at 1:10000 dilution.  
 Lysates/proteins: 25µg per lane.  
 Blocking buffer: 3% nonfat dry milk in TBST.  
 Detection: ECL Basic Kit (RM00020).  
 Exposure time: 3min.



Western blot analysis of extracts from wild type (WT) and cIAP1 knockout (KO) 293T cells, using cIAP1 antibody (A19688) at 1:1000 dilution.  
 Secondary antibody: HRP Goat Anti-Rabbit IgG (H+L) (AS014) at 1:10000 dilution.  
 Lysates/proteins: 25µg per lane.  
 Blocking buffer: 3% nonfat dry milk in TBST.  
 Detection: ECL Basic Kit (RM00020).  
 Exposure time: 90s.



Immunohistochemistry analysis of paraffin-embedded rat ovary using cIAP1 antibody (A19688) at dilution of 1:100 (40x lens). Perform microwave antigen retrieval with 10 mM PBS buffer pH 7.2 before commencing with IHC staining protocol.