

# ENT2/SLC29A2 Rabbit mAb

Catalog No.: A19691 **Recombinant**

## Basic Information

### Observed MW

### Calculated MW

50kDa

### Category

Primary antibody

### Applications

ELISA, IHC-P, IF/ICC

### Cross-Reactivity

Human, Mouse, Rat

### CloneNo number

ARC2234

## Background

The uptake of nucleosides by transporters, such as SLC29A2, is essential for nucleotide synthesis by salvage pathways in cells that lack de novo biosynthetic pathways. Nucleoside transport also plays a key role in the regulation of many physiologic processes through its effect on adenosine concentration at the cell surface (Griffiths et al., 1997 [PubMed 9396714]).

## Recommended Dilutions

IHC-P 1:50 - 1:200

IF/ICC 1:50 - 1:200

## Immunogen Information

### Gene ID

3177

### Swiss Prot

Q14542

### Immunogen

A synthetic peptide corresponding to a sequence within amino acids 1-100 of human ENT2/SLC29A2 (Q14542).

### Synonyms

ENT2; DER12; HNP36; ENT2/SLC29A2

## Contact

☎ | 400-999-6126

✉ | [cn.market@abclonal.com.cn](mailto:cn.market@abclonal.com.cn)

🌐 | [www.abclonal.com.cn](http://www.abclonal.com.cn)

## Product Information

### Source

Rabbit

### Isotype

IgG

### Purification

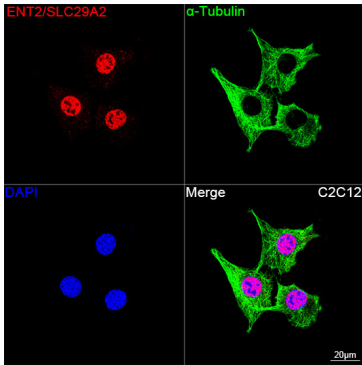
Affinity purification

### Storage

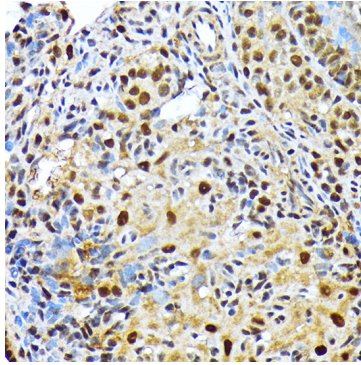
Store at -20°C. Avoid freeze / thaw cycles.

Buffer: PBS with 0.02% sodium azide, 0.05% BSA, 50% glycerol, pH7.3.

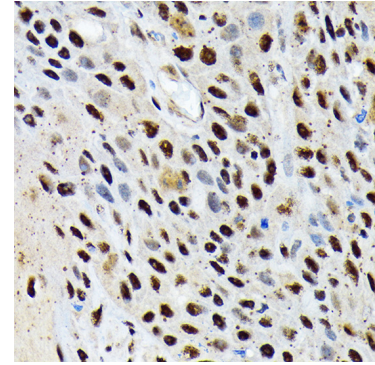
## Validation Data



Confocal imaging of C2C12 cells using ENT2/SLC29A2 Rabbit mAb (A19691, dilution 1:200) followed by a further incubation with Cy3 Goat Anti-Rabbit IgG (H+L) (AS007, dilution 1:500) (Red). The cells were counterstained with  $\alpha$ -Tubulin Mouse mAb (AC012, dilution 1:400) followed by incubation with ABflo® 488-conjugated Goat Anti-Mouse IgG (H+L) Ab (AS076, dilution 1:500) (Green). DAPI was used for nuclear staining (Blue). Objective: 100x.



Immunohistochemistry analysis of paraffin-embedded rat ovary using ENT2/SLC29A2 Rabbit mAb (A19691) at dilution of 1:100 (40x lens). Perform microwave antigen retrieval with 10 mM Tris/EDTA buffer pH 9.0 before commencing with IHC staining protocol.



Immunohistochemistry analysis of paraffin-embedded human esophageal cancer using ENT2/SLC29A2 Rabbit mAb (A19691) at dilution of 1:100 (40x lens). Perform microwave antigen retrieval with 10 mM Tris/EDTA buffer pH 9.0 before commencing with IHC staining protocol.