

IKK α Rabbit mAb

Catalog No.: A19694 **Recombinant** **4 Publications**

Basic Information

Observed MW

85kDa

Calculated MW

85kDa

Category

Primary antibody

Applications

WB,ELISA

Cross-Reactivity

Human, Mouse

CloneNo number

ARC0174

Background

This gene encodes a member of the serine/threonine protein kinase family. The encoded protein, a component of a cytokine-activated protein complex that is an inhibitor of the essential transcription factor NF-kappa-B complex, phosphorylates sites that trigger the degradation of the inhibitor via the ubiquination pathway, thereby activating the transcription factor.

Recommended Dilutions

WB 1:1000 - 1:2000

ELISA Recommended starting concentration is 1 μ g/mL. Please optimize the concentration based on your specific assay requirements.

Immunogen Information

Gene ID

1147

Swiss Prot

O15111

Immunogen

A synthetic peptide corresponding to a sequence within amino acids 1-100 of human IKK α (NP_001269.3).

Synonyms

BPS2; IKK1; IKKA; IKBKA; TCF16; NFKBIKA; IKK-alpha; IKK α

Contact

 | 400-999-6126

 | cn.market@abclonal.com.cn

 | www.abclonal.com.cn

Product Information

Source

Rabbit

Isotype

IgG

Purification

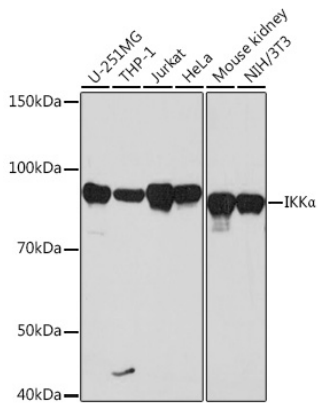
Affinity purification

Storage

Store at -20°C. Avoid freeze / thaw cycles.

Buffer: PBS with 0.02% sodium azide,0.05% BSA,50% glycerol,pH7.3.

Validation Data



Western blot analysis of various lysates using IKK α Rabbit mAb (A19694) at 1:1000 dilution. Secondary antibody: HRP-conjugated Goat anti-Rabbit IgG (H+L) (AS014) at 1:10000 dilution. Lysates/proteins: 25 μ g per lane. Blocking buffer: 3% nonfat dry milk in TBST. Detection: ECL Basic Kit (RM00020). Exposure time: 90s.