

SQSTM1/p62 Rabbit mAb

Catalog No.: A19700 **Recombinant** **98 Publications**

Basic Information

Observed MW

62kDa

Calculated MW

48kDa

Category

Primary antibody

Applications

WB,IHC-P,IF/ICC,IP,ELISA

Cross-Reactivity

Human, Mouse, Rat

CloneNo number

ARC0180

Background

This gene encodes a multifunctional protein that binds ubiquitin and regulates activation of the nuclear factor kappa-B (NF- κ B) signaling pathway. The protein functions as a scaffolding/adaptor protein in concert with TNF receptor-associated factor 6 to mediate activation of NF- κ B in response to upstream signals. Alternatively spliced transcript variants encoding either the same or different isoforms have been identified for this gene. Mutations in this gene result in sporadic and familial Paget disease of bone.

Recommended Dilutions

WB	1:20000 - 1:80000
IHC-P	1:500 - 1:5000
IF/ICC	1:50 - 1:200
IP	0.5 μ g-4 μ g antibody for 200 μ g-400 μ g extracts of whole cells
ELISA	Recommended starting concentration is 1 μ g/mL. Please optimize the concentration based on your specific assay requirements.

Contact

☎ | 400-999-6126

✉ | cn.market@abclonal.com.cn

🌐 | www.abclonal.com.cn

Immunogen Information

Gene ID

8878

Swiss Prot

Q13501

Immunogen

A synthetic peptide corresponding to a sequence within amino acids 341-440 of human SQSTM1/p62 (Q13501).

Synonyms

p60; p62; A170; DMRV; OSIL; PDB3; ZIP3; p62B; NADGP; FTDALS3; SQSTM1/p62

Product Information

Source

Rabbit

Isotype

IgG

Purification

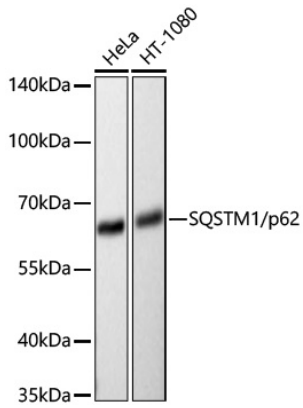
Affinity purification

Storage

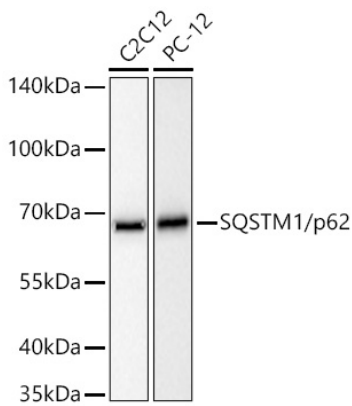
Store at -20°C. Avoid freeze / thaw cycles.

Buffer: PBS with 0.05% proclin300,0.05% BSA,50% glycerol,pH7.3.

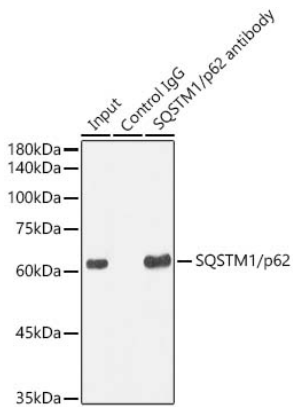
Validation Data



Western blot analysis of various lysates using SQSTM1/p62 Rabbit mAb (A19700) at 1:20000 dilution incubated overnight at 4°C.
Secondary antibody: HRP-conjugated Goat anti-Rabbit IgG (H+L) (AS014) at 1:10000 dilution.
Lysates/proteins: 25 µg per lane.
Blocking buffer: 3% nonfat dry milk in TBST.
Detection: ECL Basic Kit (RM00020).
Exposure time: 30s.

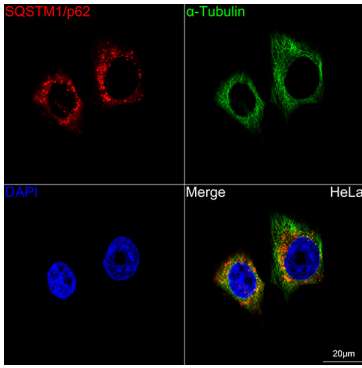


Western blot analysis of various lysates using SQSTM1/p62 Rabbit mAb (A19700) at 1:20000 dilution incubated overnight at 4°C.
Secondary antibody: HRP-conjugated Goat anti-Rabbit IgG (H+L) (AS014) at 1:10000 dilution.
Lysates/proteins: 25 µg per lane.
Blocking buffer: 3% nonfat dry milk in TBST.
Detection: ECL Basic Kit (RM00020).
Exposure time: 10s.

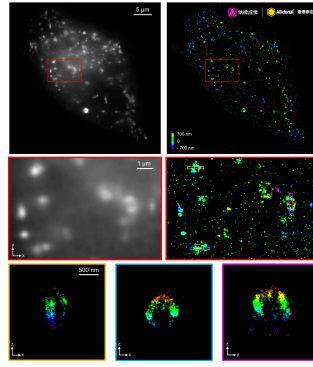


Immunoprecipitation analysis of 300 µg extracts from HeLa cells using 3 µg SQSTM1/p62 Rabbit mAb (A19700). Western blot was performed from the immunoprecipitate using SQSTM1/p62 Rabbit mAb (A19700) at a dilution of 1:1000.

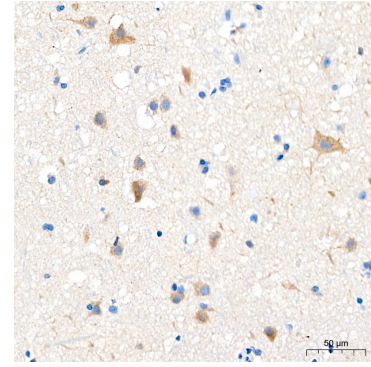
Validation Data



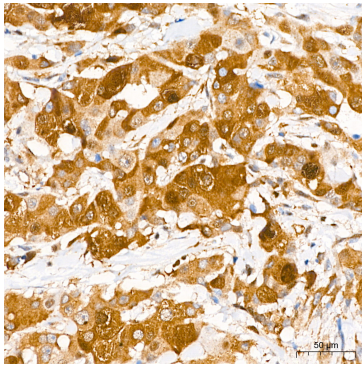
Confocal imaging of HeLa cells using SQSTM1/p62 Rabbit mAb (A19700, dilution 1:200) (Red). The cells were counterstained with Alpha-tubulin (ubiquitous) chain Rabbit mAb (AC049, dilution 1:100) (Green). DAPI was used for nuclear staining (Blue). Objective: 60x.



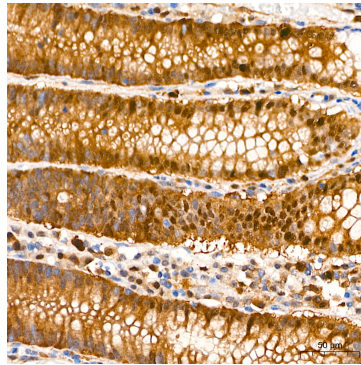
The STORM super-resolution (SR) imaging of HeLa cells using SQSTM1/p62 Rabbit mAb (A19700, AbClonal) at dilution of 1:200 with 3% paraformaldehyde (PFA) + 0.1% glutaraldehyde (GA) fixation. The immunostaining was performed by Full Automatic Immunofluorescence Workflow System (Workflow Ultra300, Nano-Micro imaging, China). Image was performed with Single-Molecule Localization Super-Resolution Microscopy (STORM Ultra300, Nano-Micro imaging, China). We acknowledge Nano-Micro imaging Biotechnology Co., Ltd. (XXXXXXXXXXXX) in SR image processing and kindly providing this image.



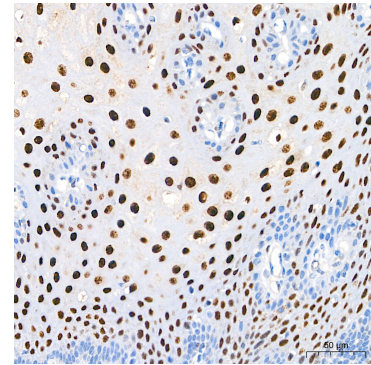
Immunohistochemistry analysis of paraffin-embedded Human brain tissue using SQSTM1/p62 Rabbit mAb (A19700) at a dilution of 1:200 with 3% paraformaldehyde (PFA) + 0.1% glutaraldehyde (GA) fixation. High pressure antigen retrieval performed with 0.01M Citrate Buffer(pH 6.0) prior to IHC staining.



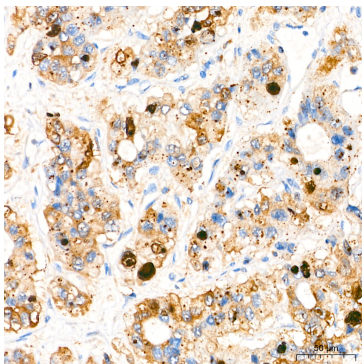
Immunohistochemistry analysis of paraffin-embedded Human breast cancer tissue using SQSTM1/p62 Rabbit mAb (A19700) at a dilution of 1:500 (40x lens). High pressure antigen retrieval performed with 0.01M Citrate Buffer(pH 6.0) prior to IHC staining.



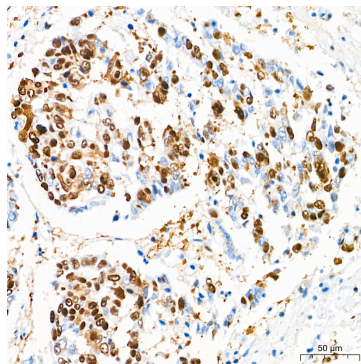
Immunohistochemistry analysis of paraffin-embedded Human colon tissue using SQSTM1/p62 Rabbit mAb (A19700) at a dilution of 1:500 (40x lens). High pressure antigen retrieval performed with 0.01M Citrate Buffer(pH 6.0) prior to IHC staining.



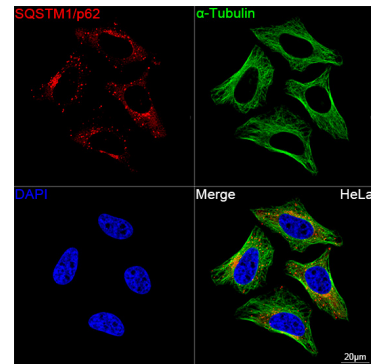
Immunohistochemistry analysis of paraffin-embedded Human esophagus tissue using SQSTM1/p62 Rabbit mAb (A19700) at a dilution of 1:500 (40x lens). High pressure antigen retrieval performed with 0.01M Citrate Buffer(pH 6.0) prior to IHC staining.



Immunohistochemistry analysis of paraffin-embedded Human liver cancer tissue using SQSTM1/p62 Rabbit mAb (A19700) at a dilution of 1:500 (40x lens). High pressure antigen retrieval performed with 0.01M Citrate Buffer(pH 6.0) prior to IHC staining.



Immunohistochemistry analysis of paraffin-embedded Human lung squamous carcinoma using SQSTM1/p62 Rabbit mAb (A19700) at a dilution of 1:500 (40x lens). High pressure antigen retrieval performed with 0.01M Citrate Buffer(pH 6.0) prior to IHC staining.



Confocal imaging of HeLa cells using SQSTM1/p62 Rabbit mAb (A19700, dilution 1:200) (Red). The cells were counterstained with Alpha-tubulin (ubiquitous) chain Rabbit mAb (AC049, dilution 1:100) (Green). DAPI was used for nuclear staining (Blue). Objective: 60x.

Validation Data

SQSTM1/p62 Rabbit mAb (A19700) at a dilution of 1:500 (40x lens). High pressure antigen retrieval performed with 0.01M Citrate Buffer(pH 6.0) prior to IHC staining.

tissue using SQSTM1/p62 Rabbit mAb (A19700) at a dilution of 1:500 (40x lens). High pressure antigen retrieval performed with 0.01M Citrate Buffer(pH 6.0) prior to IHC staining.

1:200) followed by a further incubation with Cy3 Goat Anti-Rabbit IgG (H+L) (AS007, dilution 1:500) (Red). The cells were counterstained with α -Tubulin Mouse mAb (AC012, dilution 1:400) followed by incubation with ABflo® 488-conjugated Goat Anti-Mouse IgG (H+L) Ab (AS076, dilution 1:500) (Green). DAPI was used for nuclear staining (Blue). Objective: 100x.