

HSPA4 Rabbit mAb

Catalog No.: A19705

Recombinant

1 Publications

Basic Information

Observed MW

110kDa

Calculated MW

94kDa

Category

Primary antibody

Applications

ELISA, WB, IHC-P

Cross-Reactivity

Human, Mouse, Rat

CloneNo number

ARC2237

Background

Predicted to enable ATP binding activity. Involved in chaperone-mediated protein complex assembly and protein insertion into mitochondrial outer membrane. Located in cytosol and extracellular exosome. Implicated in Chagas disease. Biomarker of chronic obstructive pulmonary disease; rheumatoid arthritis; type 2 diabetes mellitus; and ulcerative colitis.

Recommended Dilutions

WB 1:500 - 1:2000

IHC-P 1:50 - 1:200

Immunogen Information

Gene ID

3308

Swiss Prot

P34932

Immunogen

A synthetic peptide corresponding to a sequence within amino acids 700-800 of human HSPA4 (P34932).

Synonyms

RY; APG-2; HSPH2; hsp70; hsp70RY; HEL-S-5a; HS24/P52; HSPA4

Contact

☎ | 400-999-6126

✉ | cn.market@abclonal.com.cn

🌐 | www.abclonal.com.cn

Product Information

Source

Rabbit

Isotype

IgG

Purification

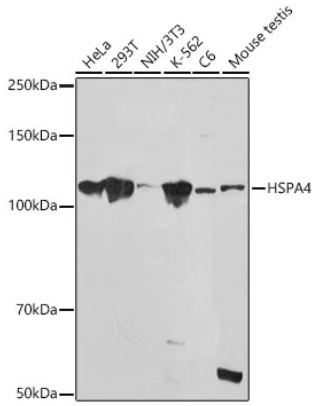
Affinity purification

Storage

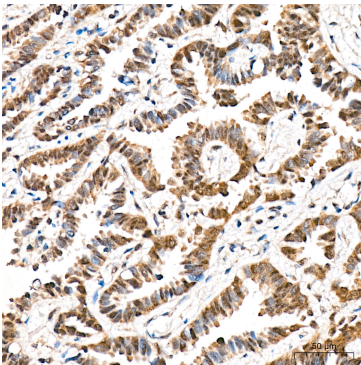
Store at -20°C. Avoid freeze / thaw cycles.

Buffer: PBS with 0.02% sodium azide, 0.05% BSA, 50% glycerol, pH7.3.

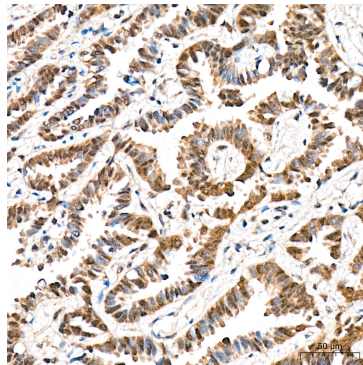
Validation Data



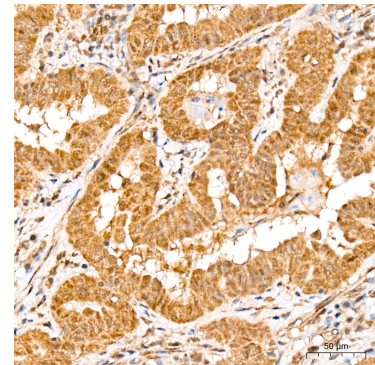
Western blot analysis of various lysates using HSPA4 Rabbit mAb (A19705) at 1:1000 dilution. Secondary antibody: HRP Goat Anti-Rabbit IgG (H+L) (AS014) at 1:10000 dilution. Lysates/proteins: 25µg per lane. Blocking buffer: 3% nonfat dry milk in TBST. Detection: ECL Basic Kit (RM00020). Exposure time: 90s.



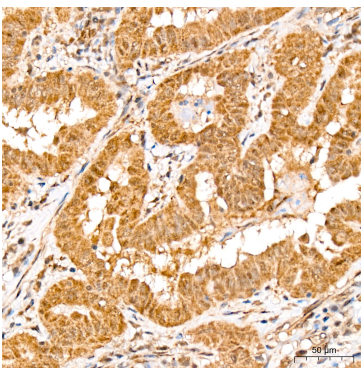
Immunohistochemistry analysis of paraffin-embedded rat liver using HSPA4 Rabbit mAb (A19705) at dilution of 1:100 (40x lens). Perform microwave antigen retrieval with 10 mM Tris/EDTA buffer pH 9.0 before commencing with IHC staining protocol.



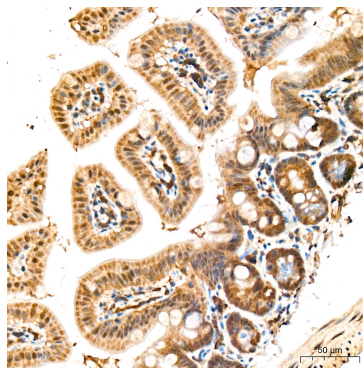
Immunohistochemistry analysis of HSPA4 in paraffin-embedded Human lung adenocarcinoma tissue using HSPA4 Rabbit mAb (A19705) at a dilution of 1:200 (40x lens). High pressure antigen retrieval was performed with 0.01 M citrate buffer (pH 6.0) prior to IHC staining.



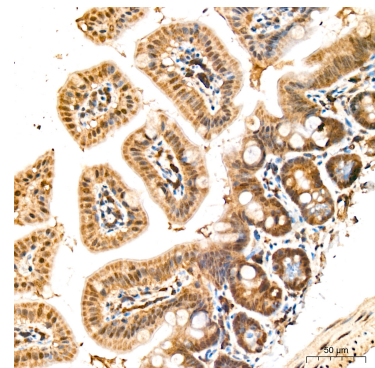
Immunohistochemistry analysis of paraffin-embedded human liver cancer using HSPA4 Rabbit mAb (A19705) at dilution of 1:100 (40x lens). Perform microwave antigen retrieval with 10 mM Tris/EDTA buffer pH 9.0 before commencing with IHC staining protocol.



Immunohistochemistry analysis of HSPA4 in paraffin-embedded human thyroid cancer tissue using HSPA4 Rabbit mAb (A19705) at a dilution of 1:200 (40x lens). High pressure antigen retrieval was performed with 0.01 M citrate buffer (pH 6.0) prior to IHC staining.



Immunohistochemistry analysis of paraffin-embedded mouse spinal cord using HSPA4 Rabbit mAb (A19705) at dilution of 1:100 (40x lens). Perform microwave antigen retrieval with 10 mM Tris/EDTA buffer pH 9.0 before commencing with IHC staining protocol.



Immunohistochemistry analysis of HSPA4 in paraffin-embedded mouse intestine tissue using HSPA4 Rabbit mAb (A19705) at a dilution of 1:200 (40x lens). High pressure antigen retrieval was performed with 0.01 M citrate buffer (pH 6.0) prior to IHC staining.