

Human IgG Rabbit mAb

Catalog No.: A19711 **Recombinant** **14 Publications**

Basic Information

Observed MW

50kDa

Calculated MW

52kDa

Category

Primary antibody

Applications

ELISA, WB, IHC-P

Cross-Reactivity

Human

CloneNo number

ARC2241

Background

Predicted to enable antigen binding activity and immunoglobulin receptor binding activity. Predicted to be involved in several processes, including activation of immune response; defense response to other organism; and phagocytosis. Predicted to act upstream of or within several processes, including immunoglobulin mediated immune response; positive regulation of hypersensitivity; and positive regulation of phagocytosis. Located in extracellular space.

Recommended Dilutions

WB 1:1000 - 1:5000

IHC-P 1:100 - 1:500

Immunogen Information

Gene ID

3500

Swiss Prot

P01857, P01859, P01860, P01861

Immunogen

Human IgG

Synonyms

Contact

☎ | 400-999-6126

✉ | cn.market@abclonal.com.cn

🌐 | www.abclonal.com.cn

Product Information

Source

Rabbit

Isotype

IgG

Purification

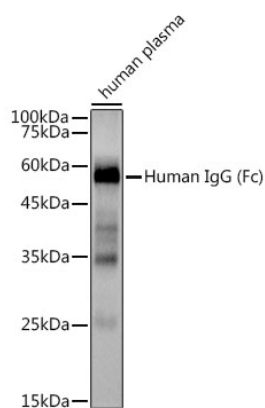
Affinity purification

Storage

Store at -20°C. Avoid freeze / thaw cycles.

Buffer: PBS with 0.02% sodium azide, 0.05% BSA, 50% glycerol, pH7.3.

Validation Data



Western blot analysis of lysates from Human plasma, using Human IgG Rabbit mAb (A19711) at 1:3000 dilution.

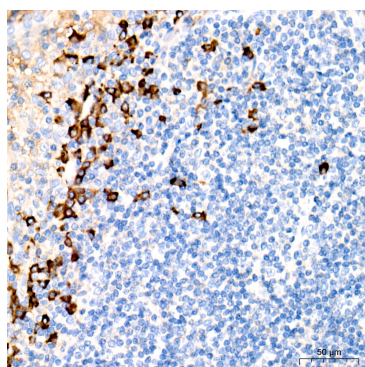
Secondary antibody: HRP Goat Anti-Rabbit IgG (H+L) (AS014) at 1:10000 dilution.

Lysates/proteins: 25µg per lane.

Blocking buffer: 3% nonfat dry milk in TBST.

Detection: ECL Basic Kit (RM00020).

Exposure time: 1s.



Immunohistochemistry analysis of Human IgG in paraffin-embedded human tonsil using Human IgG Rabbit mAb (A19711) at dilution of 1:300 (40x lens). Perform high pressure antigen retrieval with 10 mM citrate buffer pH 6.0 before commencing with IHC staining protocol.