

Human IgG3 Rabbit mAb

Catalog No.: A19713 **Recombinant**

Basic Information

Observed MW

60kDa

Calculated MW

41kDa

Category

Primary antibody

Applications

ELISA, WB

Cross-Reactivity

Human

CloneNo number

ARC2243

Background

Predicted to enable antigen binding activity and immunoglobulin receptor binding activity. Involved in retina homeostasis. Located in blood microparticle and extracellular exosome.

Recommended Dilutions

WB 1:1000 - 1:5000

Immunogen Information

Gene ID

3502

Swiss Prot

P01860

Immunogen

A synthetic peptide corresponding to a sequence within amino acids 50-150 of human IgG3 (P01860).

Synonyms

IgG3; Human IgG3

Contact

 | 400-999-6126

 | cn.market@abclonal.com.cn

 | www.abclonal.com.cn

Product Information

Source

Rabbit

Isotype

IgG

Purification

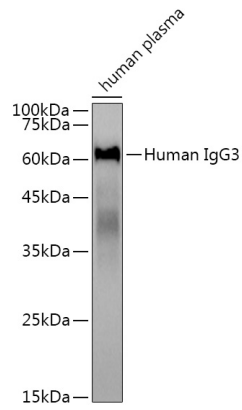
Affinity purification

Storage

Store at -20°C. Avoid freeze / thaw cycles.

Buffer: PBS with 0.02% sodium azide, 0.05% BSA, 50% glycerol, pH7.3.

Validation Data



Western blot analysis of lysates from human plasma, using Human IgG3 Rabbit mAb (A19713) at 1:3000 dilution.

Secondary antibody: HRP Goat Anti-Rabbit IgG (H+L) (AS014) at 1:10000 dilution.

Lysates/proteins: 25 μ g per lane.

Blocking buffer: 3% nonfat dry milk in TBST.

Detection: ECL Basic Kit (RM00020).

Exposure time: 1s.