

Human Ig Kappa Chain Rabbit mAb

Catalog No.: A19720 **Recombinant**

Basic Information

Observed MW

25kDa

Calculated MW

12kDa

Category

Primary antibody

Applications

ELISA, WB

Cross-Reactivity

Human

CloneNo number

ARC2247

Background

Predicted to enable antigen binding activity and immunoglobulin receptor binding activity. Involved in retina homeostasis. Located in blood microparticle and extracellular exosome.

Recommended Dilutions

WB 1:500 - 1:1000

Immunogen Information

Gene ID

3514

Swiss Prot

P01834

Immunogen

Recombinant fusion protein containing a sequence corresponding to amino acids 1-107 of human Ig Kappa Chain (P01834).

Synonyms

Km; HCAK1; IGKCD; Human Ig Kappa Chain

Contact

☎ | 400-999-6126

✉ | cn.market@abclonal.com.cn

🌐 | www.abclonal.com.cn

Product Information

Source

Rabbit

Isotype

IgG

Purification

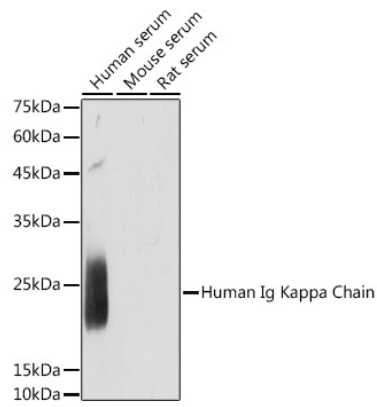
Affinity purification

Storage

Store at -20°C. Avoid freeze / thaw cycles.

Buffer: PBS with 0.02% sodium azide, 0.05% BSA, 50% glycerol, pH7.3.

Validation Data



Western blot analysis of extracts of various cell lines, using Human Ig Kappa Chain antibody (A19720) at 1:1000 dilution.

Secondary antibody: HRP Goat Anti-Rabbit IgG (H+L) (AS014) at 1:10000 dilution.

Lysates/proteins: 25µg per lane.

Blocking buffer: 3% nonfat dry milk in TBST.

Detection: ECL Enhanced Kit (RM00021).

Exposure time: 1s.