

MEKK2 Rabbit mAb

Catalog No.: A19739 **Recombinant**

Basic Information

Observed MW

78kDa

Calculated MW

70kDa

Category

Primary antibody

Applications

ELISA, WB, IHC-P

Cross-Reactivity

Human, Mouse, Rat

CloneNo number

ARC2291

Background

The protein encoded by this gene is a member of serine/threonine protein kinase family. This kinase preferentially activates other kinases involved in the MAP kinase signaling pathway. This kinase has been shown to directly phosphorylate and activate I κ B kinases, and thus plays a role in NF- κ B signaling pathway. This kinase has also been found to bind and activate protein kinase C-related kinase 2, which suggests its involvement in a regulated signaling process.

Recommended Dilutions

WB	1:500 - 1:2000
IHC-P	1:50 - 1:200

Immunogen Information

Gene ID

10746

Swiss Prot

Q9Y2U5

Immunogen

A synthetic peptide corresponding to a sequence within amino acids 1-100 of human MEKK2 (Q9Y2U5).

Synonyms

MEKK2; MEKK2B

Contact

 | 400-999-6126

 | cn.market@abclonal.com.cn

 | www.abclonal.com.cn

Product Information

Source

Rabbit

Isotype

IgG

Purification

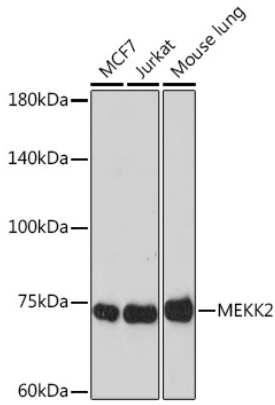
Affinity purification

Storage

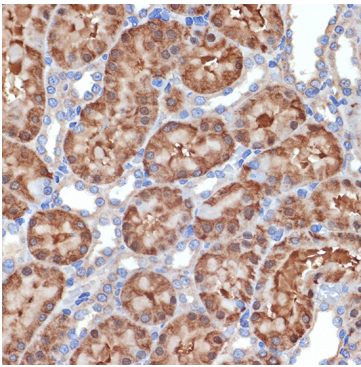
Store at -20°C. Avoid freeze / thaw cycles.

Buffer: PBS with 0.02% sodium azide, 0.05% BSA, 50% glycerol, pH7.3.

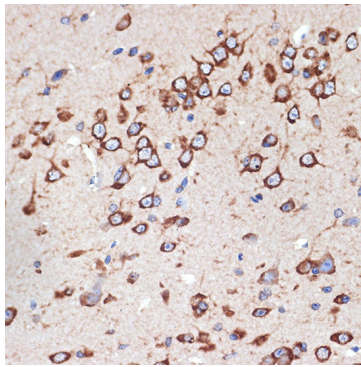
Validation Data



Western blot analysis of various lysates using MEKK2 Rabbit mAb (A19739) at 1:1000 dilution.
Secondary antibody: HRP Goat Anti-Rabbit IgG (H+L) (AS014) at 1:10000 dilution.
Lysates/proteins: 25µg per lane.
Blocking buffer: 3% nonfat dry milk in TBST.
Detection: ECL Enhanced Kit (RM00021).
Exposure time: 180s.



Immunohistochemistry analysis of paraffin-embedded rat kidney using MEKK2 Rabbit mAb (A19739) at dilution of 1:100 (40x lens). Perform microwave antigen retrieval with 10 mM Tris/EDTA buffer pH 9.0 before commencing with IHC staining protocol.



Immunohistochemistry analysis of paraffin-embedded mouse brain using MEKK2 Rabbit mAb (A19739) at dilution of 1:100 (40x lens). Perform microwave antigen retrieval with 10 mM Tris/EDTA buffer pH 9.0 before commencing with IHC staining protocol.