

Proteinase 3/PR3 Rabbit mAb

Catalog No.: A19748 **Recombinant** **2 Publications**

Basic Information

Observed MW

Refer to figures

Calculated MW

28kDa

Category

Primary antibody

Applications

IF-P,ELISA

Cross-Reactivity

Human

CloneNo number

ARC2275

Background

Enables enzyme binding activity; serine-type endopeptidase activity; and signaling receptor binding activity. Involved in several processes, including mature conventional dendritic cell differentiation; membrane protein ectodomain proteolysis; and neutrophil extravasation. Located in azurophil granule lumen; cytosol; and plasma membrane raft. Colocalizes with plasma membrane.

Recommended Dilutions

IF-P 1:50 - 1:200

ELISA Recommended starting concentration is 1 µg/mL. Please optimize the concentration based on your specific assay requirements.

Immunogen Information

Gene ID

5657

Swiss Prot

P24158

Immunogen

Synthetic peptide. This information is considered to be commercially sensitive.

Synonyms

MBN; MBT; NP4; P29; PR3; ACPA; AGP7; NP-4; PR-3; CANCA; C-ANCA; Proteinase 3/PR3

Contact

☎ | 400-999-6126

✉ | cn.market@abclonal.com.cn

🌐 | www.abclonal.com.cn

Product Information

Source

Rabbit

Isotype

IgG

Purification

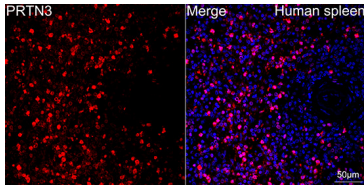
Affinity purification

Storage

Store at -20°C. Avoid freeze / thaw cycles.

Buffer: PBS containing 50% glycerol and 0.05% BSA, preserved with proclin300 or sodium azide (as specified on the Certificate of Analysis), pH 7.3.

Validation Data



Confocal imaging of paraffin-embedded Human spleen using Proteinase 3/PR3 Rabbit mAb (A19748, dilution 1:200) followed by a further incubation with Cy3 Goat Anti-Rabbit IgG (H+L) (AS007, dilution 1:500) (Red). DAPI was used for nuclear staining (Blue). Objective: 40x. Perform high pressure antigen retrieval with 0.01 M citrate buffer (pH 6.0) prior to IF staining.