

PSMB5 Rabbit pAb

Catalog No.: A1975 **1 Publications**

Basic Information

Observed MW

22kDa/28kDa

Calculated MW

28kDa

Category

Primary antibody

Applications

WB,IHC-P,IF/ICC,IP,ELISA

Cross-Reactivity

Human, Mouse, Rat

Background

The proteasome is a multicatalytic proteinase complex with a highly ordered ring-shaped 20S core structure. The core structure is composed of 4 rings of 28 non-identical subunits; 2 rings are composed of 7 alpha subunits and 2 rings are composed of 7 beta subunits. Proteasomes are distributed throughout eukaryotic cells at a high concentration and cleave peptides in an ATP/ubiquitin-dependent process in a non-lysosomal pathway. An essential function of a modified proteasome, the immunoproteasome, is the processing of class I MHC peptides. This gene encodes a member of the proteasome B-type family, also known as the T1B family, that is a 20S core beta subunit in the proteasome. This catalytic subunit is not present in the immunoproteasome and is replaced by catalytic subunit 3i (proteasome beta 8 subunit). Multiple transcript variants encoding different isoforms have been found for this gene.

Recommended Dilutions

WB	1:2000 - 1:7000
IHC-P	1:500 - 1:1000
IF/ICC	1:50 - 1:200
IP	0.5µg-4µg antibody for 200µg-400µg extracts of whole cells
ELISA	Recommended starting concentration is 1 µg/mL. Please optimize the concentration based on your specific assay requirements.

Contact

 | 400-999-6126

 | cn.market@abclonal.com.cn

 | www.abclonal.com.cn

Immunogen Information

Gene ID

5693

Swiss Prot

P28074

Immunogen

Recombinant protein (or fragment). This information is considered to be commercially sensitive.

Synonyms

MB1; LMPX; PSMB5

Product Information

Source

Rabbit

Isotype

IgG

Purification

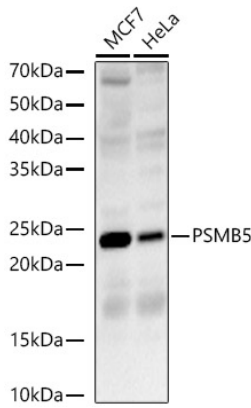
Affinity purification

Storage

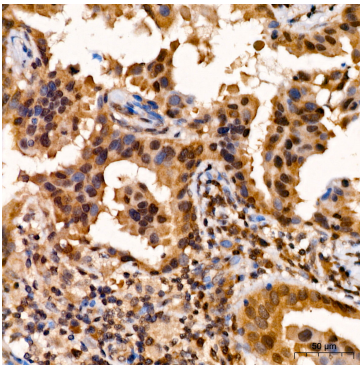
Store at -20°C. Avoid freeze / thaw cycles.

Buffer: PBS containing 50% glycerol, preserved with proclin300 or sodium azide (as specified on the Certificate of Analysis), pH 7.3.

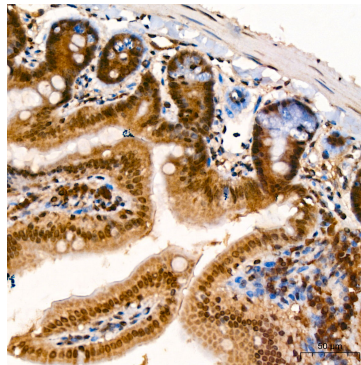
Validation Data



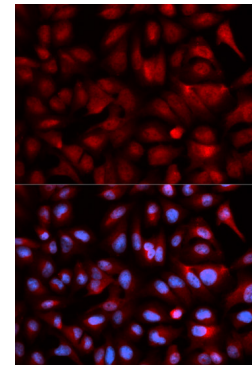
Western blot analysis of various lysates, using PSMB5 Rabbit pAb (A1975) at 1:6000 dilution. Secondary antibody: HRP-conjugated Goat anti-Rabbit IgG (H+L) (AS014) at 1:10000 dilution. Lysates/proteins: 25µg per lane. Blocking buffer: 3% nonfat dry milk in TBST. Detection: ECL Basic Kit (RM00020). Exposure time: 60s.



Immunohistochemistry analysis of paraffin-embedded Human breast tissue using PSMB5 Rabbit pAb (A1975) at a dilution of 1:600 (40x lens). High pressure antigen retrieval was performed with 0.01 M citrate buffer (pH 6.0) prior to IHC staining.



Immunohistochemistry analysis of paraffin-embedded Mouse Intestine tissue using PSMB5 Rabbit pAb (A1975) at a dilution of 1:600 (40x lens). High pressure antigen retrieval was performed with 0.01 M citrate buffer (pH 6.0) prior to IHC staining.



Immunofluorescence analysis of U2OS cells using PSMB5 Rabbit pAb (A1975). Secondary antibody: Cy3-conjugated Goat anti-Rabbit IgG (H+L) (AS007) at 1:500 dilution. Blue: DAPI for nuclear staining.