

ROR β Rabbit mAb

Catalog No.: A19753 **Recombinant**

Basic Information

Observed MW

53kDa

Calculated MW

53kDa

Category

Primary antibody

Applications

ELISA, WB

Cross-Reactivity

Human, Mouse, Rat

CloneNo number

ARC2279

Background

The protein encoded by this gene is a member of the NR1 subfamily of nuclear hormone receptors. It is a DNA-binding protein that can bind as a monomer or as a homodimer to hormone response elements upstream of several genes to enhance the expression of those genes. The encoded protein has been shown to interact with NM23-2, a nucleoside diphosphate kinase involved in organogenesis and differentiation, and to help regulate the expression of some genes involved in circadian rhythm.

Recommended Dilutions

WB 1:500 - 1:1000

Immunogen Information

Gene ID

6096

Swiss Prot

Q92753

Immunogen

A synthetic peptide corresponding to a sequence within amino acids 1-100 of human ROR β (Q92753).

Synonyms

RZRB; EIG15; NR1F2; ROR-BETA; RZR-BETA; bA133M9.1; ROR β

Contact

☎ | 400-999-6126

✉ | cn.market@abclonal.com.cn

🌐 | www.abclonal.com.cn

Product Information

Source

Rabbit

Isotype

IgG

Purification

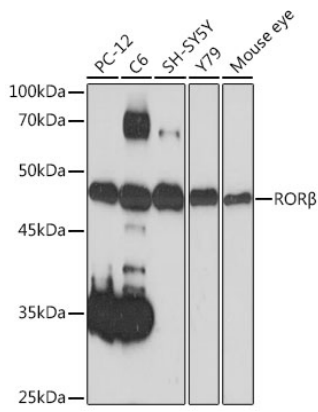
Affinity purification

Storage

Store at -20°C. Avoid freeze / thaw cycles.

Buffer: PBS with 0.02% sodium azide, 0.05% BSA, 50% glycerol, pH7.3.

Validation Data



Western blot analysis of extracts of various cell lines, using ROR β Rabbit mAb (A19753) at 1:1000 dilution.
Secondary antibody: HRP Goat Anti-Rabbit IgG (H+L) (AS014) at 1:10000 dilution.
Lysates/proteins: 25 μ g per lane.
Blocking buffer: 3% nonfat dry milk in TBST.
Detection: ECL Basic Kit (RM00020).
Exposure time: 60s.