

WDR4 Rabbit mAb

Catalog No.: A19765

Recombinant

1 Publications

Basic Information

Observed MW

49kDa

Calculated MW

45kDa

Category

Primary antibody

Applications

WB,IHC-P,ChIP,ELISA

Cross-Reactivity

Human, Mouse, Rat

CloneNo number

ARC2292

Background

This gene encodes a member of the WD repeat protein family. WD repeats are minimally conserved regions of approximately 40 amino acids typically bracketed by gly-his and trp-asp (GH-WD), which may facilitate formation of heterotrimeric or multiprotein complexes. Members of this family are involved in a variety of cellular processes, including cell cycle progression, signal transduction, apoptosis, and gene regulation. This gene is excluded as a candidate for a form of nonsyndromic deafness (DFNB10), but is still a candidate for other disorders mapped to 21q22.3 as well as for the development of Down syndrome phenotypes. Alternatively spliced transcript variants have been found for this gene.

Recommended Dilutions

WB 1:1000 - 1:6000**IHC-P** 1:100 - 1:500**ChIP** 3µg antibody for
15µg-25µg of Chromatin**ELISA** Recommended starting
concentration is 1 µg/mL.
Please optimize the
concentration based on
your specific assay
requirements.

Contact

 | 400-999-6126 | cn.market@abclonal.com.cn | www.abclonal.com.cn

Immunogen Information

Gene ID

10785

Swiss Prot

P57081

Immunogen

Synthetic peptide. This information is considered to be commercially sensitive.

Synonyms

hWH; Wuho; MIGSB; TRM82; GAMOS6; TRMT82; WDR4

Product Information

Source

Rabbit

Isotype

IgG

Purification

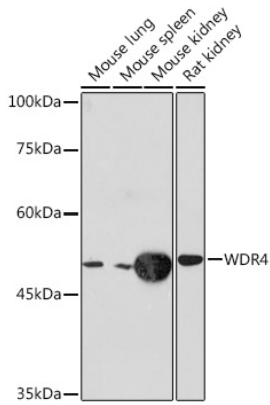
Affinity purification

Storage

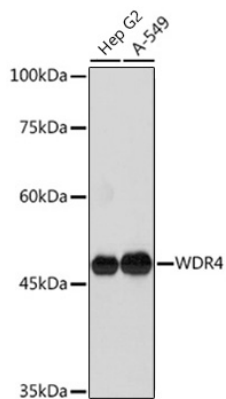
Store at -20°C. Avoid freeze / thaw cycles.

Buffer: PBS containing 50% glycerol and 0.05% BSA, preserved with proclin300 or sodium azide (as specified on the Certificate of Analysis), pH 7.3.

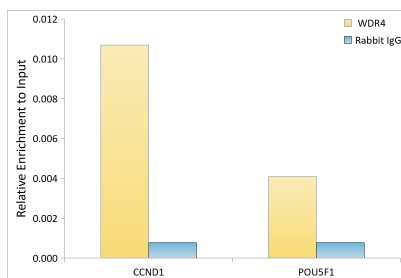
Validation Data



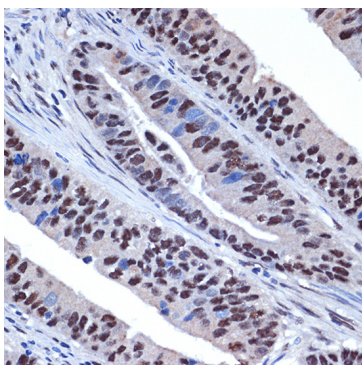
Western blot analysis of various lysates using WDR4 Rabbit mAb (A19765) at 1:1000 dilution. Secondary antibody: HRP-conjugated Goat anti-Rabbit IgG (H+L) (AS014) at 1:10000 dilution. Lysates/proteins: 25µg per lane. Blocking buffer: 3% nonfat dry milk in TBST. Detection: ECL Basic Kit (RM00020). Exposure time: 10s.



Western blot analysis of various lysates using WDR4 Rabbit mAb (A19765) at 1:1000 dilution. Secondary antibody: HRP-conjugated Goat anti-Rabbit IgG (H+L) (AS014) at 1:10000 dilution. Lysates/proteins: 25µg per lane. Blocking buffer: 3% nonfat dry milk in TBST. Detection: ECL Basic Kit (RM00020). Exposure time: 60s.



Chromatin immunoprecipitation was performed with 25 µg of cross-linked chromatin from NIH/3T3, using 3 µg of WDR4 Rabbit mAb (A19765) and Rabbit IgG isotype control (AC042). The enrichment of immunoprecipitated DNA at different genomic loci was examined by quantitative PCR. The histogram compares the ratio of the immunoprecipitated DNA to the input at given loci.



Validation Data

Immunohistochemistry analysis of paraffin-embedded Human colon carcinoma using WDR4 Rabbit mAb (A19765) at dilution of 1:100 (40x lens). Microwave antigen retrieval performed with 0.01M Tris/EDTA Buffer (pH 9.0) prior to IHC staining.