

PHF8 Rabbit mAb

Catalog No.: A19780 **Recombinant** **1 Publications**

Basic Information

Observed MW

140kDa

Calculated MW

118kDa

Category

Primary antibody

Applications

WB, ELISA

Cross-Reactivity

Human, Mouse

CloneNo number

ARC2306

Background

The protein encoded by this gene is a histone lysine demethylase that preferentially acts on histones in the monomethyl or dimethyl states. The encoded protein requires Fe(2+) ion, 2-oxoglutarate, and oxygen for its catalytic activity. The protein has an N-terminal PHD finger and a central Jumonji C domain. This gene is thought to function as a transcription activator. Defects in this gene are a cause of syndromic X-linked Siderius type intellectual disability (MRXSSD) and over-expression of this gene is associated with several forms of cancer. Multiple transcript variants encoding different isoforms have been found for this gene.

Recommended Dilutions

WB 1:500 - 1:1000

ELISA Recommended starting concentration is 1 µg/mL. Please optimize the concentration based on your specific assay requirements.

Immunogen Information

Gene ID

23133

Swiss Prot

Q9UPP1

Immunogen

Synthetic peptide. This information is considered to be commercially sensitive.

Synonyms

KDM7B; JHDM1F; MRXSSD; ZNF422; PHF8

Contact

☎ | 400-999-6126

✉ | cn.market@abclonal.com.cn

🌐 | www.abclonal.com.cn

Product Information

Source

Rabbit

Isotype

IgG

Purification

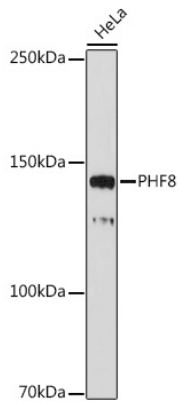
Affinity purification

Storage

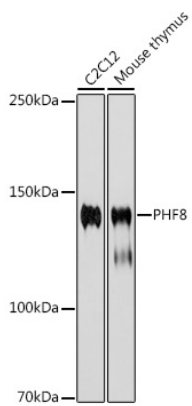
Store at -20°C. Avoid freeze / thaw cycles.

Buffer: PBS containing 50% glycerol and 0.05% BSA, preserved with proclin300 or sodium azide (as specified on the Certificate of Analysis), pH 7.3.

Validation Data



Western blot analysis of lysates from HeLa cells, using PHF8 Rabbit mAb (A19780) at 1:1000 dilution.
Secondary antibody: HRP-conjugated Goat anti-Rabbit IgG (H+L) (AS014) at 1:10000 dilution.
Lysates/proteins: 25µg per lane.
Blocking buffer: 3% nonfat dry milk in TBST.
Detection: ECL Basic Kit (RM00020).
Exposure time: 30s.



Western blot analysis of various lysates using PHF8 Rabbit mAb (A19780) at 1:1000 dilution.
Secondary antibody: HRP-conjugated Goat anti-Rabbit IgG (H+L) (AS014) at 1:10000 dilution.
Lysates/proteins: 25µg per lane.
Blocking buffer: 3% nonfat dry milk in TBST.
Detection: ECL Basic Kit (RM00020).
Exposure time: 180s.